

## 12-1024: Recombinant Rabbit Monoclonal Antibody to Glycophorin A / CD235a (Erythrocyte Marker)(Clone : GYPA/1725R)

<b>Clonality :</b>	Monoclonal
<b>Clone Name :</b>	GYPA/1725R
<b>Application :</b>	WB,IHC
<b>Reactivity :</b>	Human
<b>Gene :</b>	GYPA
<b>Gene ID :</b>	2993 & 2994
<b>Uniprot ID :</b>	P02724
<b>Format :</b>	Purified
<b>Alternative Name :</b>	Blood group--MN locus, GPA, GPERik, GpMIII, GPSAT, GYPA, MN sialoglycoprotein, MNS, PAS2, Sialoglycoprotein alpha
<b>Isotype :</b>	Rabbit IgG
<b>Immunogen Information :</b>	Recombinant human full-length Glycophorin A protein

### Description

Recognizes a sialoglycoprotein of 39kDa, identified as glycophorin A (GPA). It is present on red blood cells (RBC) and erythroid precursor cells. It has been shown that glycophorin acts as the receptor for Sandei virus and parvovirus. Glycophorins A (GPA) and B (GPB), which are single, trans-membrane sialoglycoproteins. GPA is the carrier of blood group M and N specificities, while GPB accounts for S and U specificities. GPA and GPB provide the cells with a large mucin like surface and it has been suggested this provides a barrier to cell fusion, so minimizing aggregation between red blood cells in the circulation.

### Product Info

<b>Amount :</b>	20 µg / 100 µg
<b>Purification :</b>	Purified Ab with BSA and Azide at 200ug/ml
<b>Content :</b>	200ug/ml of Ab purified by Protein A. Prepared in 10mM PBS with 0.05% BSA & 0.05% azide. Also available WITHOUT BSA & azide at 1.0mg/ml.
<b>Storage condition :</b>	Store the antibody at 4°C; stable for 6 months. For long-term storage; store at -20°C. Avoid repeated freeze and thaw cycles.

### Application Note

Western Blot (1-2Âµg/ml); Immunohistochemistry (Formalin-fixed) (1-2Âµg/ml for 30 minutes at RT)(Staining of formalin-fixed tissues requires heating tissue sections in 10mM Tris with 1mM EDTA, pH 9.0, for 45 min at 95&degC followed by cooling at RT for 20 minutes);

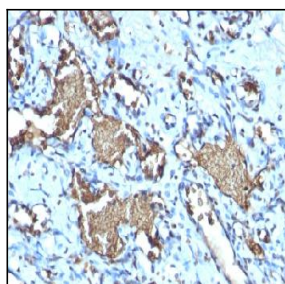


Figure 1: Formalin-fixed, paraffin-embedded human Angiosarcoma stained with Glycophorin A Rabbit Recombinant Monoclonal Antibody (GYPA/1725R).

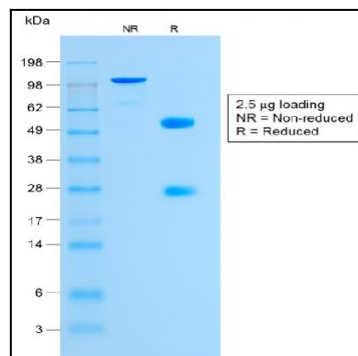


Figure 2: SDS-PAGE Analysis Purified Glycophorin A Rabbit Monoclonal Antibody (GYPA/1725R).