

## 12-1032: Recombinant Rabbit Monoclonal Antibody to NKX2.2 (Neuroendocrine & Ewing s Sarcoma Marker)(Clone : NX2/1422R)

<b>Clonality :</b>	Monoclonal
<b>Clone Name :</b>	NX2/1422R
<b>Application :</b>	IHC
<b>Reactivity :</b>	Human
<b>Gene :</b>	NKX2-2
<b>Gene ID :</b>	4821
<b>Uniprot ID :</b>	O95096
<b>Format :</b>	Purified
<b>Alternative Name :</b>	Homeobox protein NK-2 homolog B, NK2 transcription factor like protein B, NK2 transcription factor related locus 2, NKX22, Nkx2b, tinman
<b>Isotype :</b>	Rabbit IgG
<b>Immunogen Information :</b>	Recombinant human NKX2.2 protein fragment (exact sequence is proprietary)

### Description

Expression of NKX2.2 has been found in neuroendocrine tumors of the gut, making it a potential marker for the study of gastrointestinal neuroendocrine tumors. More recently, NKX2.2 protein was identified as a target of EWS-FLI-1, the fusion protein specific to Ewing sarcoma, and was shown to be differentially upregulated in Ewing sarcoma on the basis of array-based gene expression analysis. It acts as a valuable marker for Ewing sarcoma, with a sensitivity of 93% and a specificity of 89%, and aids in the differential diagnosis of small round cell tumors.

### Product Info

<b>Amount :</b>	20 µg / 100 µg
<b>Purification :</b>	Purified Ab with BSA and Azide at 200ug/ml
<b>Content :</b>	200ug/ml of Ab purified by Protein A. Prepared in 10mM PBS with 0.05% BSA & 0.05% azide. Also available WITHOUT BSA & azide at 1.0mg/ml.
<b>Storage condition :</b>	Store the antibody at 4°C; stable for 6 months. For long-term storage; store at -20°C. Avoid repeated freeze and thaw cycles.

### Application Note

Immunohistochemistry (Formalin-fixed) (1-2µg/ml for 30 minutes at RT)(Staining of formalin-fixed tissues requires heating tissue sections in 10mM Tris with 1mM EDTA, pH 9.0, for 45 min at 95°C followed by cooling at RT for 20 minutes);

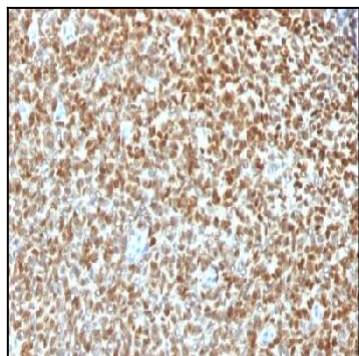


Figure 1: Formalin-fixed, paraffin-embedded human Ewing's Sarcoma stained with NKX2.2 Rabbit Recombinant Monoclonal Antibody (NX2/1422R).

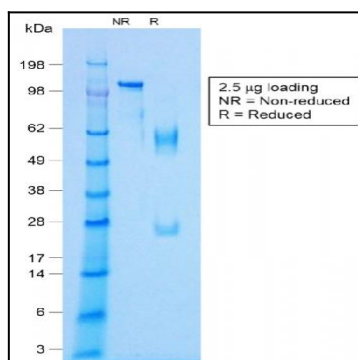


Figure 2: SDS-PAGE Analysis Purified NKX2.2 Rabbit Recombinant Monoclonal Antibody (NX2/1422R).