

12-1033: Recombinant Rabbit Monoclonal Antibody to PDCD1 / PD1 / CD279 (Programmed Cell Death 1)(Clone : PDCD1/1410R)

Clonality :	Monoclonal
Clone Name :	PDCD1/1410R
Application :	IHC
Reactivity :	Human
Gene :	PDCD1
Gene ID :	5133
Uniprot ID :	Q15116
Format :	Purified
Alternative Name :	CD279, hPD-1, hSLE1, PD1, PDCD1, Programmed Cell Death Protein 1, Protein PD-1, SLEB2, Systemic lupus erythematosus susceptibility 2
Isotype :	Rabbit IgG
Immunogen Information :	Human recombinant PDCD1 protein fragment (exact sequence is proprietary)

Description

PDCD-1 (programmed cell death-1 protein), also designated CD279, is a type I transmembrane receptor and a member of the immunoglobulin gene superfamily. It is expressed on activated T-cells, B-cells, and myeloid cells. Anti-PDCD-1 is a marker of angioimmunoblastic lymphoma and suggests a unique cell of origin for this neoplasm. Unlike CD10 and BCL6, PDCD-1 is expressed by few B-cells, so anti-PDCD-1 may be a more specific and useful diagnostic marker in angioimmunoblastic lymphoma. In addition, PDCD-1 expression provides evidence that angioimmunoblastic lymphoma is a neoplasm derived from germinal center-associated T-cells.

Product Info

Amount :	20 µg / 100 µg
Purification :	Purified Ab with BSA and Azide at 200ug/ml
Content :	200ug/ml of Ab purified by Protein A/G. Prepared in 10mM PBS with 0.05% BSA & 0.05% azide. Also available WITHOUT BSA & azide at 1.0mg/ml.
Storage condition :	Store the antibody at 4°C; stable for 6 months. For long-term storage; store at -20°C. Avoid repeated freeze and thaw cycles.

Application Note

Immunohistochemistry (Formalin-fixed) (1-2 µg/ml for 30 minutes at RT)(Staining of formalin-fixed tissues requires heating tissue sections in 10mM Tris with 1mM EDTA, pH 9.0, for 45 min at 95°C followed by cooling at RT for 20 minutes)

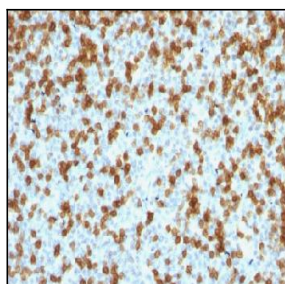


Figure 1: Formalin-fixed, paraffin-embedded human Tonsil stained with PD1 (CD279) Rabbit Recombinant Monoclonal Antibody (PDCD1/1410R).

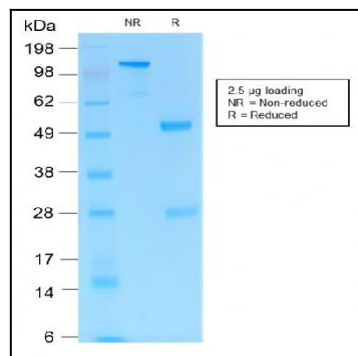


Figure 2: SDS-PAGE Analysis Purified PD1 (CD279) Rabbit Monoclonal Antibody (PDCD1/1410R).