

12-1040: Recombinant Rabbit Monoclonal Antibody to gp100 / Melanosome / PMEL17 / SILV (Melanoma Marker)(Clone : PMEL/1825R)

Clonality :	Monoclonal
Clone Name :	PMEL/1825R
Application :	WB,IHC
Reactivity :	Human
Gene :	PMEL
Gene ID :	6490
Uniprot ID :	P40967
Format :	Purified
Alternative Name :	95kDa melanocyte-specific secreted glycoprotein, M-beta, Melanocyte lineage specific antigen GP100, Melanocyte protein Pmel 17, Melanoma associated ME20 antigen, Melanosomal matrix protein17, p100, p26, PMEL17, Premelanosome protein, Secreted melanoma-associated ME20 antigen, SILV, Silver homolog
Isotype :	Rabbit IgG
Immunogen Information :	Recombinant full-length human SILV protein

Description

Cytotoxic T lymphocytes (CTL s) recognize melanoma-associated antigens, which belong to three main groups. These groups include tumor-associated testis-specific antigens, melanocyte differentiation antigens and mutated or aberrantly expressed antigens, which are routinely used as markers to identify melanomas based on their binding to specific monoclonal antibodies. gp100, also designated ME20-M, ME20-S and PMEL 17, is classified as a melanocyte differentiation antigen and is expressed at low levels in normal cell lines and tissues, but is upregulated in melanocytes. gp100 is a highly glycosylated protein. It is also the product of proteolytic cleavage, which results in a secreted protein.

Product Info

Amount :	20 µg / 100 µg
Purification :	Purified Ab with BSA and Azide at 200ug/ml
Content :	200ug/ml of recombinant MAb purified by Protein A/G. Prepared in 10mM PBS with 0.05% BSA & 0.05% azide. Also available WITHOUT BSA & azide at 1.0mg/ml.
Storage condition :	Store the antibody at 4°C; stable for 6 months. For long-term storage; store at -20°C. Avoid repeated freeze and thaw cycles.

Application Note

Western Blot (1-2Âµg/ml); ,Immunohistochemistry (Formalin-fixed) (1-2Âµg/ml for 30 minutes at RT),(Staining of formalin-fixed tissues requires heating tissue sections in 10mM Tris with 1mM EDTA, pH 9.0, for 45 min at 95 °C followed by cooling at RT for 20 minutes),

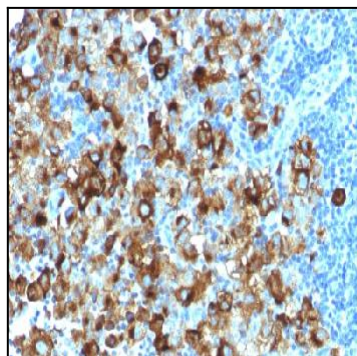


Figure 1: Formalin-fixed, paraffin-embedded human Melanoma stained with gp100 Rabbit Recombinant Monoclonal Antibody (PMEL/1825R).

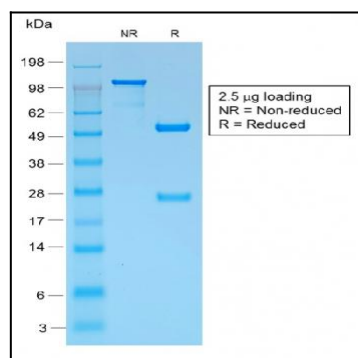


Figure 2: SDS-PAGE Analysis Purified gp100 Rabbit Recombinant Monoclonal Antibody (PMEL/1825R).