

12-1056: Recombinant Rabbit Monoclonal Antibody to CA19-9/Sialyl Lewis a (GI Tumor Marker)(Clone : CA19.9/1390R)

Clonality :	Monoclonal
Clone Name :	CA19.9/1390R
Application :	IHC
Reactivity :	Human
Gene :	ST6GALNAC6
Gene ID :	30815
Uniprot ID :	Q969X2
Format :	Purified
Alternative Name :	CA19.9, Ovarian tumor antigen, Pancreatic tumor antigen, Sialyl Lewis a
Isotype :	Rabbit IgG
Immunogen Information :	Purified human CA19-9 protein

Description

CA19-9, a carbohydrate epitope expressed on a high MW (>400kDa) mucin glycoprotein, is a sialyl Lewis a structure which is synthesized from type 1 blood group precursor chains and is present in individuals expressing the Lewis a and/or Lewis b blood group antigens. In normal tissues, sialyl Lewis a antigen is present in ductal epithelium of the breast, kidney, salivary gland, and sweat glands. Its expression is greatly enhanced in serum as well as in the majority of tumor cells in gastrointestinal (GI) carcinomas, including adenocarcinomas of the stomach, intestine, and pancreas. Preoperative elevated CA19-9 levels in patients with stage I pancreatic carcinoma decrease to normal values following surgery. When used serially, CA19-9 can predict recurrence of disease prior to radiographic or clinical findings. This MAb is excellent for staining of formalin-fixed, paraffin-embedded tissues.

Product Info

Amount :	20 µg / 100 µg
Purification :	Purified Ab with BSA and Azide at 200ug/ml
Content :	200ug/ml of Ab purified by Protein A column. Prepared in 10mM PBS with 0.05% BSA & 0.05% azide. Also available WITHOUT BSA and Azide at 1.0mg/ml.
Storage condition :	Store the antibody at 4°C; stable for 6 months. For long-term storage; store at -20°C. Avoid repeated freeze and thaw cycles.

Application Note

Immunohistochemistry (Formalin-fixed) (5-10µg/ml for 30 minutes at RT)(Staining of formalin-fixed tissues requires heating tissue sections in 10mM Tris with 1mM EDTA, pH 9.0, for 45 min at 95°C followed by cooling at RT for 20 minutes);

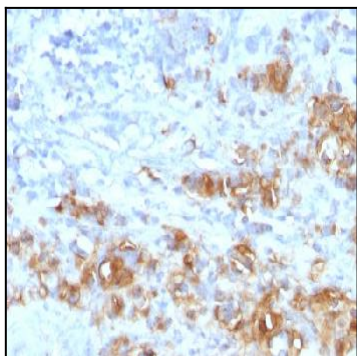


Figure 1: Formalin-fixed, paraffin-embedded human Gastric Carcinoma stained with CA19-9 Rabbit Recombinant Monoclonal Antibody (CA19.9/1390R).

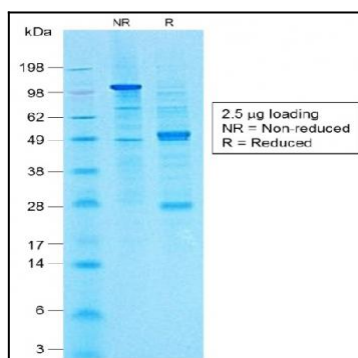


Figure 2: SDS-PAGE Analysis of Purified CA19-9 Rabbit Monoclonal Antibody (CA19.9/1390R).