



34-1005: Monoclonal Antibody to Aldehyde dehydrogenase H1L1, ALDH1L1(Clone:2E7)

Clonality :	Monoclonal
Clone Name :	4A12
Application :	WB
Reactivity :	Human
Gene :	ALDH1L1
Gene ID :	10840
Uniprot ID :	O75891
Format :	Purified
Alternative Name :	Aldehyde dehydrogenase family 1 member L1
Isotype :	Mouse, IgG2b
Immunogen Information :	Amino acids 402-902 of human ALDH1L1 expressed in and purified from E. coli.

Product Info

Amount :	50 µl / 100 µl
Content :	Antibody is supplied as an aliquot of 1 mg/ml of affinity purified antibody or concentrated tissue culture supernatant.
Storage condition :	Store the antibody at 4°C; stable for 6 months. For long-term storage; store at -20°C. Avoid repeated freeze and thaw cycles.

Application Note

WB: 1:5,000-1:10,000. IF/ICC and IHC: 1:1,000.

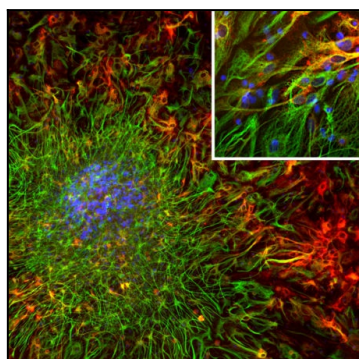


Figure-1: Immunofluorescent analysis of cortical neuron-glia cell culture from E20 rat stained with mouse mAb to aldehyde dehydrogenase 1-L1 (ALDH1L1),(34-1005), dilution 1:1,000 in red, and costained with chicken pAb to GFAP,(34-1046), dilution 1:5,000 in green. The blue is Hoechst staining of nuclear DNA. The (34-1005) antibody produces cytoplasmic staining of glial cells, while the(34-1046) antibody labels the intermediate filament cytoskeleton in astrocytes and other glial cells. Some astrocytic cells express both ALDH1L1 and GFAP and therefore appear yellow.

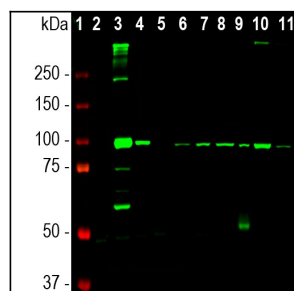


Figure-2: Western blot analysis of different tissue and cell lysates using mouse mAb to ALDH1L1,(34-1005), dilution 1:5,000 in green: [1] protein standard (red), rat tissue lysates: [2] heart, [3] liver, [4] kidney,[5] lung, [6] brain, and [7] spinal cord; mouse tissue lysates: [8] brain, and [9] spinal cord; cell lysates: [10] NIH-3T3, and [11] HEK293. The band at 100kDa mark corresponds to ALDH1L1 protein.