

## 34-1006: Polyclonal Antibody to Aldehyde dehydrogenase H1L1, ALDH1L1

<b>Clonality :</b>	Polyclonal
<b>Application :</b>	WB
<b>Reactivity :</b>	Human
<b>Gene :</b>	ALDH1L1
<b>Gene ID :</b>	10840
<b>Uniprot ID :</b>	O75891
<b>Format :</b>	Sera
<b>Alternative Name :</b>	Aldehyde dehydrogenase family 1 member L1
<b>Isotype :</b>	Rabbit, IgG
<b>Immunogen Information :</b>	Full length human protein

### Product Info

<b>Amount :</b>	50 µl / 100 µl
<b>Content :</b>	Antibody is supplied as an aliquot of serum.
<b>Storage condition :</b>	Store the antibody at 4°C; stable for 6 months. For long-term storage; store at -20°C. Avoid repeated freeze and thaw cycles.

### Application Note

WB: 1:2,000-5,000. IF/IHC: 1:1,000.

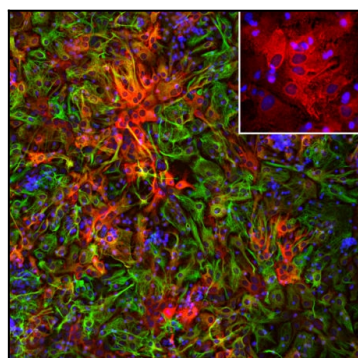


Figure-1: Immunofluorescent analysis of cortical neuron-glia cell culture from E20 rat stained with rabbit pAb to ALDH1L1, (34-1006), dilution 1:1,000 in red, and costained with chicken pAb to GFAP,(34-1046), dilution 1:5,000 in green. The blue is DAPI staining of nuclear DNA. The ALDH1L1 antibody labels protein expressed in the cytoplasm of non-neuronal cells. The GFAP antibody stains intermediate filaments in astrocytes and other glial cells.

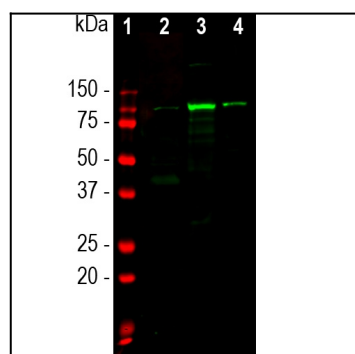


Figure-2: Western blot analysis of different tissue lysates using rabbit pAb to ALDH1L1,(34-1006), dilution 1:5,000 in green: [1] protein standard (red), [2] rat brain, [3] rat liver and [4] rat kidney. The single band at 100kDa mark corresponds to the ALDH1L1 protein.