

34-1007: Monoclonal Antibody to Aldolase C: C terminal (Clone: 1A1)

Clonality :	Monoclonal
Clone Name :	1A1
Application :	WB, IF/ICC, IHC
Reactivity :	Human, Rat, Dog, Cow, not Mouse
Gene :	ALDOC
Gene ID :	230
Uniprot ID :	P09972
Format :	Purified
Alternative Name :	Brain-type aldolase
Isotype :	Mouse, IgG1
Immunogen Information :	C-terminal sequence KYEGSGEDGGAAQSLYIANHAY

Product Info

Amount :	50 µl / 100 µl
Content :	Antibody is supplied as 1 mg/ml of affinity purified antibody or concentrated tissue culture supernatant.
Storage condition :	Store the antibody at 4°C; stable for 6 months. For long-term storage; store at -20°C. Avoid repeated freeze and thaw cycles.

Application Note

WB: 1:1,000. IF/IHC: 1:500-1:1,000.

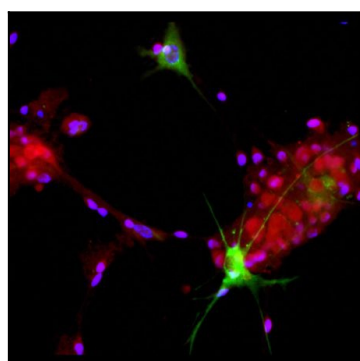


Figure-1: View of mixed neuron/glia cultures stained with (34-1007) (green) and our rabbit antibody to NeuN/FOX3 antibody (34-1036 red). (34-1007) antibody reveals strong cytoplasmic staining in astrocytes, while the Fox3/NeuN antibody shows nuclear and distal cytoplasmic staining in neuron cells and is complete absence of astrocytes. Blue is a DNA stain.

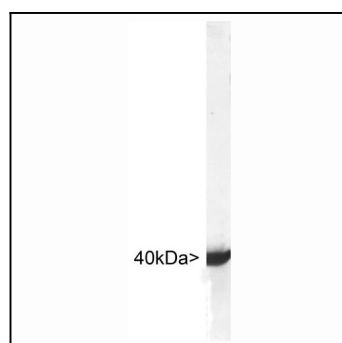


Figure-2: Blots of crude rat brain lysates blotted with (34-1007). The (34-1007) monoclonal binds strongly and cleanly to a band at about 40kDa. Other studies show that this antibody is completely specific for aldolase C, and does not react with recombinant human aldolase A or B.