

## 34-1025: Monoclonal Antibody to Cherry Dsred (Clone: 1C51)

<b>Clonality :</b>	Monoclonal
<b>Clone Name :</b>	1C51
<b>Application :</b>	WB, IF/ICC, IHC
<b>Uniprot ID :</b>	X5DSL3
<b>Format :</b>	Purified
<b>Isotype :</b>	Mouse, IgG2a
<b>Immunogen Information :</b>	Full length recombinant protein

### Product Info

<b>Amount :</b>	50 µl / 100 µl
<b>Content :</b>	Antibody is supplied as an aliquot of 1 mg/ml of affinity purified antibody.
<b>Storage condition :</b>	Store the antibody at 4°C; stable for 6 months. For long-term storage; store at -20°C. Avoid repeated freeze and thaw cycles.

### Application Note

WB: 1:2,000 IF/IHC: 1:500.

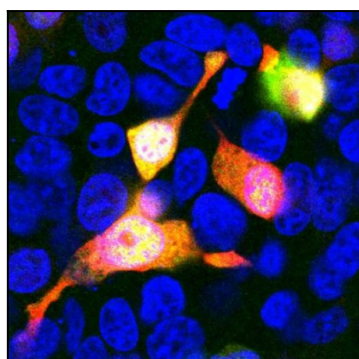


Figure-1: Immunofluorescent analysis of HEK293 cells transfected with mCherry-HA, construct, in red, and stained with mouse mAb to mCherry, (34-1025), dilution 1:500, in green. The blue is Hoechst staining of nuclear DNA. (34-1025) antibody reveals mCherry protein expressed only in transfected cells which appear golden in color. Untransfected cells do not react with the antibody, as a result only their nuclei are visible.

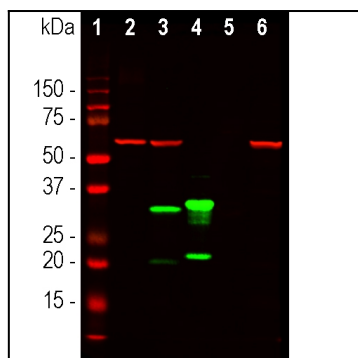


Figure-2: Western blot analysis of HEK293 cell lysates, and recombinant protein solutions using mouse mAb to mCherry, (34-1025), dilution 1:1,000, in green [1] protein standard, [2] HEK293, [3] HEK293 cells transfected with mCherry-HA construct, [4] mCherry recombinant protein, [5] GFP recombinant protein, and [6] HEK293 transfected with GFP construct. Major band at about 30kDa corresponds to mCherry protein. (34-1025) antibody does not react with GFP protein. The same blot was simultaneously probed with chicken pAb to HSP60, dilution 1:5,000 in red which reveals band at 60kDa seen only in cell lysates.