

34-1029: Monoclonal Antibody to Enolase-Alpha/ non-neuronal enolase (Clone: 253)

Clonality :	Monoclonal
Clone Name :	253
Application :	WB, IF/ICC,
Reactivity :	Human, Rat, Mouse, Cow, Pig, Horse
Gene :	ENO1
Gene ID :	2023
Uniprot ID :	P06733
Format :	Purified
Alternative Name :	2-phospho-D-glycerate hydro-lyase,C-myc promoter-binding protein,Enolase 1,MBP-1,MPB-1,NNE,Non-neural enolase,Phosphopyruvate hydratase,Plasminogen-binding protein
Isotype :	Mouse, IgG1
Immunogen Information :	N-terminal 12 amino acids of bovine enolase 1

Product Info

Amount :	50 µl / 100 µl
Content :	Antibody is supplied as an aliquot of 1 mg/ml of affinity purified antibody.
Storage condition :	Store the antibody at 4°C; stable for 6 months. For long-term storage; store at -20°C. Avoid repeated freeze and thaw cycles.

Application Note

WB: 1:5,000-1:10,000 IF/ICC and IHC: 1:2,000-1:5,000.

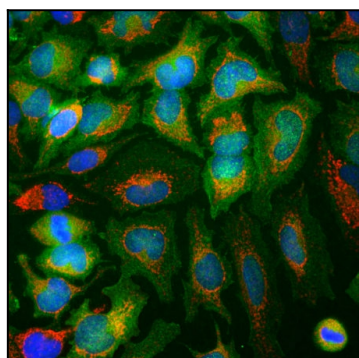


Figure-1: Immunofluorescent analysis of HeLa cells stained with mouse mAb to α -enolase,(34-1029), dilution 1:500 in green and costained with chicken pAb to HSP60, dilution 1:5,000, in red. The blue is DAPI staining of nuclear DNA. The (34-1029) antibody reveals strong cytoplasmic staining while the chicken HSP60 antibody specifically labels mitochondria in these cells.

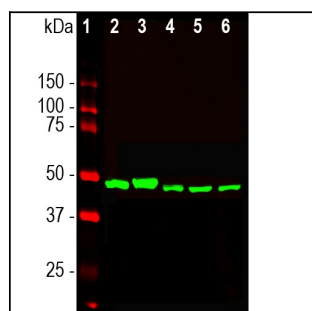


Figure-2: Western blot analysis of different cell lysates using mouse mAb to α -enolase,(34-1029), dilution 1:10,000 in green: [1] protein standard (red), [2] NIH-3T3 I, [3] C6, [4] HEK293, [5] HeLa, and [6] SH-SY5Y cells. A strong single band at 47kDa corresponds to the α -enolase protein.