

34-1039: Monoclonal Antibody to GAP43 (Clone: 1E3) (Discontinued)

Clonality :	Monoclonal
Clone Name :	1E3
Application :	IHC, WB
Reactivity :	Pig, Rat, Mouse, Human, Bovine
Gene :	GAP43
Gene ID :	2596
Uniprot ID :	P17677
Format :	Purified
Alternative Name :	Axonal membrane protein GAP-43, Growth-associated protein 43, Neural phosphoprotein B-50, pp46
Isotype :	Mouse, IgG1
Immunogen Information :	C-terminal peptide of rat and mouse GAP43, which is KEDPEADQEHA, with an N-terminal Cys added to allow chemical coupling to KLH carrier protein.

Product Info

Amount :	100 µl
Content :	Antibody is supplied as an aliquot of 1 mg/ml of affinity purified antibody or concentrated tissue culture supernatant.
Storage condition :	Store the antibody at 4°C; stable for 6 months. For long-term storage; store at -20°C. Avoid repeated freeze and thaw cycles.

Application Note

Western blots: 1:10,000. IF/ICC and IHC: 1:1,000.

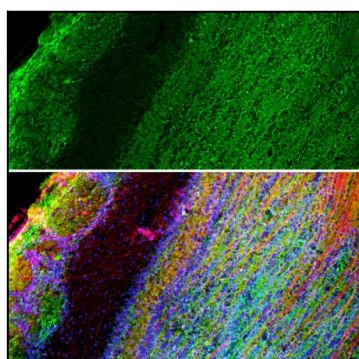


Figure 1: Mixed neuronal cultures stained with 34-1039 (green), MAP2, a rabbit antibody to microtubule associated protein 2 (MAP2, red) and DNA (blue). The GAP43 antibody stains the plasma membrane of neurons and is particularly concentrated in dendrites. [Another image is here.](#)

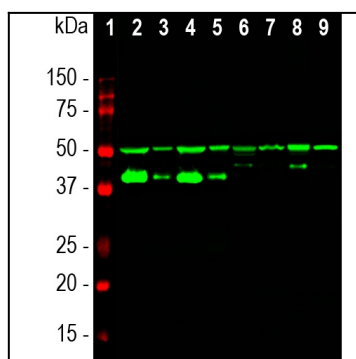


Figure 2: Western blot of whole rat spinal cord lysates probed with 34-1039 antibody to GAP43 in lane 16 and another similar antibody in lane 17. Dots in middle of strips indicate position of 50kDa and 37kDa protein bands. Note that the strong single band running at about 43kDa corresponds to GAP43.