

34-1047: Monoclonal Antibody to Glyceraldehyde 3-Phosphate Dehydrogenase (Clone: 1D4)

Clonality :	Monoclonal
Clone Name :	1D4
Application :	WB, IF/ICC, IHC
Reactivity :	Human, Rat, Mouse, Cow, Pig, Horse, monkey, Dog, Chicken
Gene :	GAPDH
Gene ID :	2597
Uniprot ID :	P04406
Format :	Purified
Alternative Name :	Peptidyl-cysteine S-nitrosylase GAPDH
Isotype :	Mouse, IgM
Immunogen Information :	Whole protein purified from pig

Product Info

Amount :	50 µl / 500 µl
Content :	Antibody is supplied as an aliquot of 1 mg/ml of affinity purified antibody.
Storage condition :	Store the antibody at 4°C; stable for 6 months. For long-term storage; store at -20°C. Avoid repeated freeze and thaw cycles.

Application Note

WB: 1:1,000 IF/IHC: 1:100.

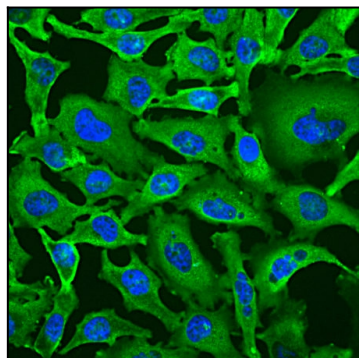


Figure-1: Immunofluorescent analysis of HeLa cells stained with mouse mAb to GAPDH,(34-1047), dilution 1:100 in green. Blue is Hoechst staining of nuclear DNA. The (34-1047) antibody produces strong cytoplasmic staining of healthy cells.

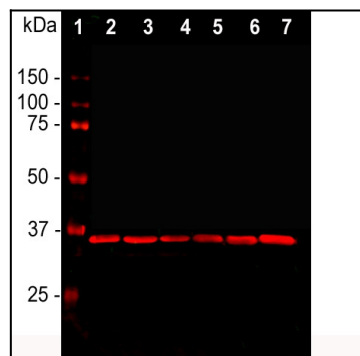


Figure-2: Western blot analysis of cell line lysates probed with mouse mAb to GAPDH,(34-1047), dilution 1:2,000: [1] protein standard, [2] HEK293, [3] HeLa, [4] SH-SY5Y, [5] COS1, [6] NIH-3T3, and [7] C6 cells. The GAPDH antibody reveals a single band at ~37 kDa in all cell lines. GAPDH is a "house keeping" protein, the level of which is relatively unaffected by most experimental manipulations, and, as a result, this antibody has been widely used as a western blotting loading control.