

## 34-1051: Monoclonal Antibody to High mobility group box 1, Amphoterin, HMGB1(Clone: 1F3)

<b>Clonality :</b>	Monoclonal
<b>Clone Name :</b>	1F3
<b>Application :</b>	WB, IF/ICC, IHC
<b>Reactivity :</b>	Human, Rat, Mouse
<b>Gene :</b>	HMGB1
<b>Gene ID :</b>	3146
<b>Uniprot ID :</b>	P09429
<b>Format :</b>	Purified
<b>Alternative Name :</b>	High mobility group protein 1
<b>Isotype :</b>	Mouse, IgG2b
<b>Immunogen Information :</b>	Human full length protein expressed and purified from E. coli

### Product Info

<b>Amount :</b>	50 µl / 100 µl
<b>Content :</b>	Antibody is supplied as an aliquot of 3 mg/ml of affinity purified antibody or concentrated tissue culture supernatant.
<b>Storage condition :</b>	Store the antibody at 4°C; stable for 6 months. For long-term storage; store at -20°C. Avoid repeated freeze and thaw cycles.

### Application Note

WB: 1:1,000-1:2,000. ICC/IF and IHC: 1:1,000

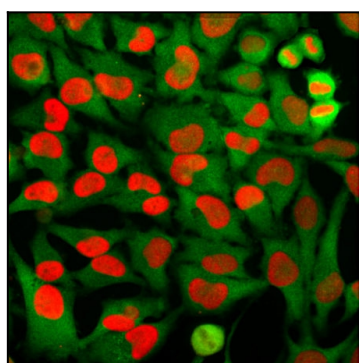


Figure-1: Immunofluorescent analysis of HeLa cells stained with mouse mAb to HMGB1,(34-1051), dilution 1:2,000 in red and costained with rabbit pAb to GAPDH, (34-1048), dilution 1:2,000 in green. (34-1051) antibody stains the chromatin binding protein HMGB1, which is localized in the nuclei. In contrast the (34-1048) antibody produces strong cytoplasmic staining of cells.

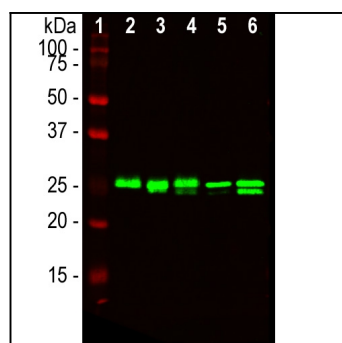


Figure-2: Western blot analysis of lysates from different cell lines probed with mouse mAb to high mobility group protein B1, (HMGB1),(34-1051), dilution 1:2,000: [1] protein standard, [2] NIH-3T3, [3] C6, [4] HEK293, [5] HeLa, and [6] SH-SY5Y. The 25kDa band revealed by (34-1051) antibody corresponds to the HMGB1 protein.