

34-1052: Monoclonal Antibody to α -internexin/NF66 (Clone: 1D2)

Clonality :	Monoclonal
Clone Name :	1D2
Application :	WB, IF/ICC, IHC
Reactivity :	Human, Cat, Rat, Mouse
Gene :	INA
Gene ID :	9118
Uniprot ID :	Q16352
Format :	T.C. Sup.
Alternative Name :	66 kDa neurofilament protein, Neurofilament 5
Isotype :	Mouse, IgG1
Immunogen Information :	Purified recombinant rat α -internexin expressed in and purified from E. coli.

Product Info

Amount :	50 μ l / 500 μ l
Content :	Antibody is supplied as an aliquot of 1 mg/ml of affinity purified antibody or concentrated tissue culture supernatant.
Storage condition :	Store the antibody at 4°C; stable for 6 months. For long-term storage; store at -20°C. Avoid repeated freeze and thaw cycles.

Application Note

WB: 1:10,000. IF/ICC and IHC: 1:5,000.

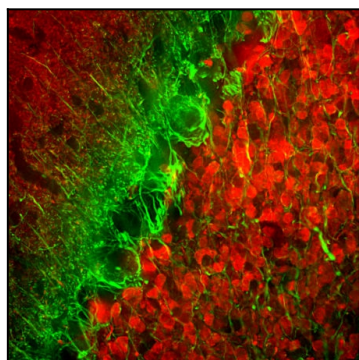


Figure-1: Immunofluorescent analysis of rat cerebellum section stained with mouse mAb to α -internexin, (34-1052), dilution 1:5,000 in green, and costained with chicken pAb to calretinin, 1:2,000 in red. Following transcardial perfusion of rat with 4% paraformaldehyde, brain was post fixed for 24 hours, cut to 45 μ m, and free-floating sections were stained with the above antibodies. The α -internexin antibody selectively stains neuronal processes, in particular parallel fibers, the axons of granule cells. Calretinin antibody stains interneurons predominantly in the molecular layer of the cerebellum.

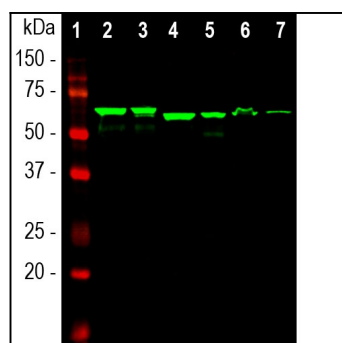


Figure-2: Western blot analysis of different tissue lysates using mouse mAb to α -internexin, (34-1052), dilution 1:10,000 in green: [1] protein standard, [2] rat brain, [3] rat spinal cord, [4] mouse brain, [5] mouse spinal cord, [6] pig spinal cord and [7] cow spinal cord. (34-1052) antibody reveals the α -internexin protein with apparent molecular weight of 64 to 66 kDa with slight variability among species.