

34-1056: Monoclonal Antibody to Lys20p and Lys21p (Clone: 31F5)

| | |
|----------------------|--------------------------|
| Clonality : | Monoclonal |
| Clone Name : | 31F5 |
| Application : | WB, IF/ICC, IHC |
| Reactivity : | Saccharomyces cerevisiae |
| Uniprot ID : | E7Q1J2 |
| Format : | T.C. Sup. |
| Isotype : | Mouse, IgG1 |

Immunogen Information : Generated from sequence of yeast Lys20p (top) and Lys21p (bottom) with the SMART program from EMBL in Heidelberg. The block marked "PFAM HMGL-like" corresponds to the Hydroxymethylglutaryl-CoA lyase (HMGL) like domain which is found in a diverse set of enzymes including various aldolases, pyruvate carboxylases and homocitrate synthases.

Product Info

| | |
|----------------------------|---|
| Amount : | 250 µl / 500 µl |
| Content : | Antibody is supplied as an aliquot of concentrated tissue culture supernatant. |
| Storage condition : | Store the antibody at 4°C; stable for 6 months. For long-term storage; store at -20°C. Avoid repeated freeze and thaw cycles. |

Application Note

WB: 1:10,000-1:50,000. ICC/IF and IHC: 1:1,000-1:10,000.

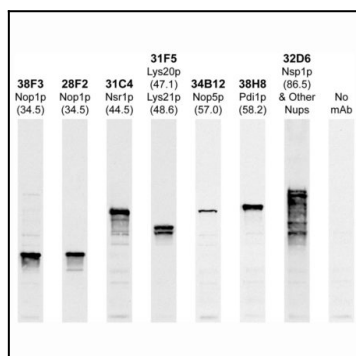


Figure-1: Western blots of whole yeast protein extracts with a collection of our antibodies. The blot for (34-1056) is in the indicated lane, and the number indicates the SDS-PAGE molecular weight in kiloDaltons.