

34-1057: Polyclonal Antibody to Lamin A/C

Clonality :	Polyclonal
Application :	WB, IF/ICC
Reactivity :	Human, Rat, Mouse, Horse, Monkey, Dog
Gene :	LMNA
Gene ID :	4000
Uniprot ID :	P02545
Format :	Conc. IgY prep.
Alternative Name :	70 kDa lamin, Renal carcinoma antigen NY-REN-32, LMN1
Isotype :	Chicken, IgY
Immunogen Information :	Full length human Lamin A purified from E. coli.

Product Info

Amount :	50 µl / 100 µl
Content :	Antibody is supplied as an aliquot of IgY preparation.
Storage condition :	Store the antibody at 4°C; stable for 6 months. For long-term storage; store at -20°C. Avoid repeated freeze and thaw cycles.

Application Note

WB: 1:2,000. IF/ICC 1:1,000

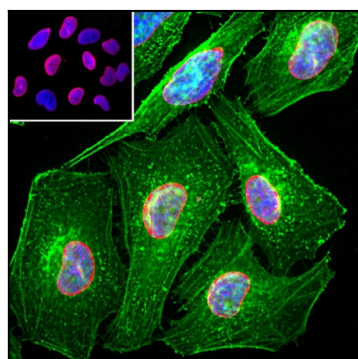


Figure-1: Immunofluorescent analysis of HeLa cells stained with chicken pAb to lamin A/C,(34-1057), dilution 1:2,000 in red, and costained with mouse mAb to actin,(34-1002), dilution 1:500, in green. The blue is Hoechst staining of nuclear DNA. The (34-1057) antibody specifically labels the nuclear lamina, while the actin antibody stains the submembranous actin-rich cytoskeleton, stress fibers and bundles of actin associated with cell adhesion sites.

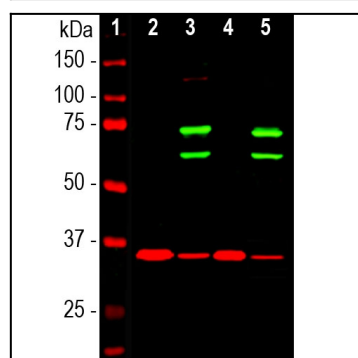


Figure-2: Western blot analysis of cytosolic or nuclear enriched fractions of cell lines probed with chicken pAb to lamin A/C,(34-1057), dilution 1:1,000 in green: [1] protein standard (red), [2] HeLa cytosol, [3] HeLa nuclear, [4] NIH-3T3 cytosol, and [5] NIH-3T3 nuclear fractions. Two strong bands at 65kDa and 74kDa correspond to lamin A and lamin C proteins respectively, detected exclusively in the nuclear fractions. The same blot was simultaneously probed with mouse mAb to GAPDH, (34-1047), in red. The single band at 37kDa represents GAPDH protein which is expressed predominantly in the cytosolic fractions.