

34-1059: Polyclonal Antibody to Lamin A/C (Discontinued)

Clonality :	Polyclonal
Application :	WB,IF/ICC,IHC
Reactivity :	Human,Bovine,Pig,Mouse,Rat
Gene :	LMNA
Gene ID :	4000
Uniprot ID :	P02545
Format :	Sera
Alternative Name :	70 kDa lamin, Renal carcinoma antigen NY-REN-32, LMN1
Isotype :	Rabbit, IgG
Immunogen Information :	Full length recombinant human Lamin A purified from E. coli

Product Info

Amount :	100 µl
Content :	Antibody is supplied as an aliquot of serum
Storage condition :	Store the antibody at 4°C; stable for 6 months. For long-term storage; store at -20°C. Avoid repeated freeze and thaw cycles.

Application Note

Western blot: 1:5,000 IF/ICC and IHC: 1:5,000

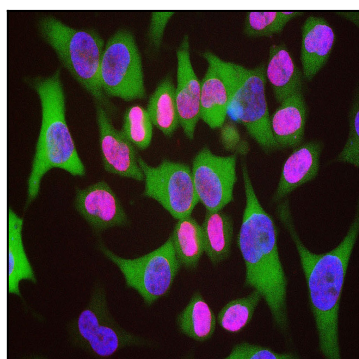


Figure 1: HeLa cells staining with 34-1059 (red) counterstained with monoclonal antibody to HSP27, 34-1050 (green) and DNA (blue). The 34-1059 antibody reveals strong nuclear lamina staining, while the 34-1050 antibody reveals strong cytoplasmic staining. Since both DNA (blue) and Lamin A/C (red) are associated with the nuclear compartment, this region appears crimson in this image.

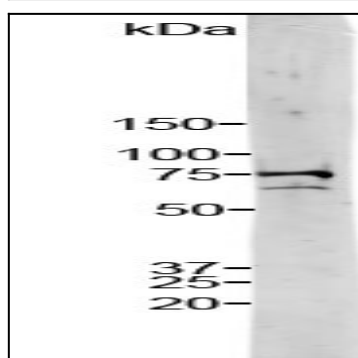


Figure 2: Strip blot of crude HeLa cell extract stained with 34-1059 . Note two strong and clean bands at 74 kDa and 65 kDa, corresponding to Lamin A and C.