

34-1062: Polyclonal Antibody to MARCKS

| | |
|--------------------------------|---|
| Clonality : | Polyclonal |
| Application : | WB, IF/ICC |
| Reactivity : | Human, not rodent |
| Gene : | MARCKS |
| Gene ID : | 65108 |
| Uniprot ID : | P49006 |
| Format : | Sera |
| Alternative Name : | MARCKS-like protein 1, Mac-MARCKS, Macrophage myristoylated alanine-rich C kinase substrate |
| Isotype : | Rabbit, IgG |
| Immunogen Information : | Full length recombinant human MARCKS purified from E. coli |

Product Info

| | |
|----------------------------|---|
| Amount : | 50 µl / 100 µl |
| Content : | Antibody is supplied as an aliquot of serum |
| Storage condition : | Store the antibody at 4°C; stable for 6 months. For long-term storage; store at -20°C. Avoid repeated freeze and thaw cycles. |

Application Note

WB: 1:10,000-1:20,000. IF/ICC and IHC: 1:500-1:1,000.

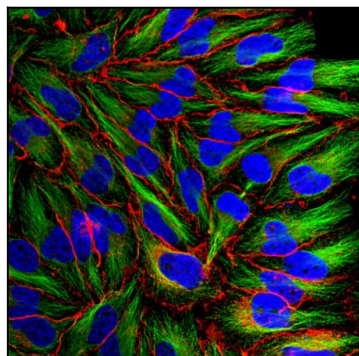


Figure-1: Immunofluorescent analysis of HeLa cells stained with rabbit pAb to MARCKS,(34-1062), dilution 1:1,000 in red, and costained with mouse mAb to β^2 -tubulin,(34-1116), dilution 1:10,000 in green. The blue is DAPI staining of nuclear DNA. The (34-1062) antibody recognizes protein localized in the plasma membrane and cytoplasm, while the β^2 -tubulin antibody stains the network of cytoplasmic microtubules.

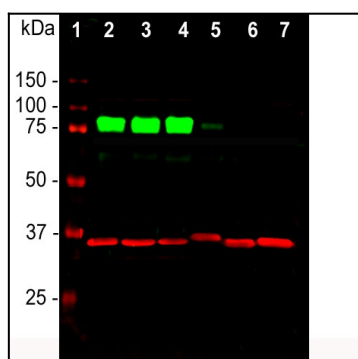


Figure-2: Western blot analysis of cell line lysates probed simultaneously with rabbit pAb to MARCKS,(34-1062), dilution 1:1,000, in green and mouse mAb to GAPDH, (34-1047), dilution 1:5,000 in red: [1] protein standard (red), [2] HEK293, [3] HeLa, [4] SH-SY5Y, [5] COS1, [6] NIH-3T3, [7] C6 cells. The strong band at ~80kDa corresponds to MARCKS protein, detected only in the proteins of human origin. Slight reactivity is observed in the monkey cells [5], but no reactivity is seen on rodent cells, [6] and [7]. GAPDH antibody used as a loading control revealing a single band at ~37kDa in all preparations.