

### 34-1065: Monoclonal Antibody to Microtubule Associated Protein 2, MAP2A/B (Clone: 4H5)

<b>Clonality :</b>	Monoclonal
<b>Clone Name :</b>	4H5
<b>Application :</b>	WB, IF/ICC, IHC
<b>Reactivity :</b>	Human, Rat, Mouse, Cow
<b>Gene :</b>	MAP2
<b>Gene ID :</b>	4133
<b>Uniprot ID :</b>	P11137
<b>Format :</b>	Purified
<b>Isotype :</b>	Mouse, IgG1
<b>Immunogen Information :</b>	Full length purified bovine protein, epitope mapped to projection domain of human sequence, between amino acids 631 and 1056.

#### Product Info

<b>Amount :</b>	50 µl / 100 µl
<b>Content :</b>	Antibody is supplied as an aliquot of 1 mg/ml of affinity purified antibody.
<b>Storage condition :</b>	Store the antibody at 4°C; stable for 6 months. For long-term storage; store at -20°C. Avoid repeated freeze and thaw cycles.

#### Application Note

WB: 1:10,000. IF/ICC and IHC: 1:1,000.

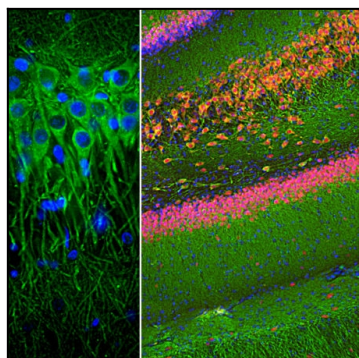


Figure-1: Immunofluorescent analysis of a rat hippocampus section stained with mouse mAb to MAP2,(34-1065), dilution 1:2,000 in green, and costained with rabbit pAb to FOX3/NeuN,(34-1036), dilution 1:2,000 in red. Following transcardial perfusion of rat with 4% paraformaldehyde, brain was post fixed for 24 hours, cut to 45µM, and free-floating sections were stained with above antibodies. The (34-1065) antibody labels MAP2 protein in the perikarya and dendrites of most neurons while the FOX3/NeuN antibody selectively stains nuclei and proximal soma of neuronal cells.

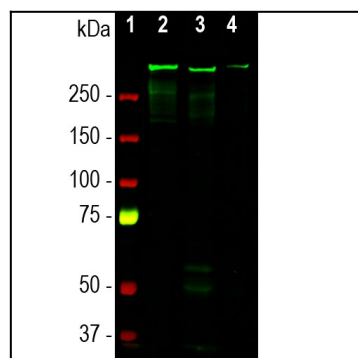


Figure-2: Western blot analysis of tissue and cell lysates using mouse mAb to MAP2,(34-1065), dilution 1:10,000 in green: [1] protein standard (red), [2] rat brain, [3] mouse brain, and [4] embryonic rat cortical neuron-glia cell lysate. A band at about 280 kDa corresponds to the MAP2A and MAP2B proteins.