

34-1071: Polyclonal Antibody to Myelin Basic Protein, MBP

Clonality :	Polyclonal
Application :	WB, IF/ICC, IHC
Reactivity :	Human, Rat, Mouse, Cow, Pig
Gene :	MBP
Gene ID :	4155
Uniprot ID :	P02686
Format :	Conc. IgY prep.
Alternative Name :	Myelin A1 protein, Myelin membrane encephalitogenic protein
Isotype :	Chicken, IgY
Immunogen Information :	Purified myelin basic protein isolated from bovine nerve.

Product Info

Amount :	50 µl / 100 µl
Content :	Antibody is supplied as an aliquot of IgY preparation.
Storage condition :	Store the antibody at 4°C; stable for 6 months. For long-term storage; store at -20°C. Avoid repeated freeze and thaw cycles.

Application Note

WB: 1:10,000. IF/ICC 1:2,000 and IHC/IF: 1:5,000.

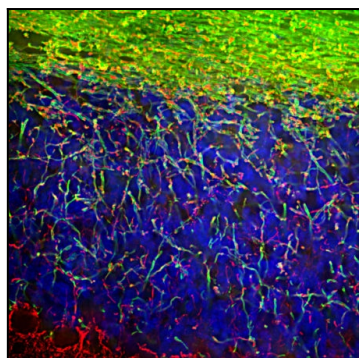


Figure-1: Immunofluorescent analysis of rat brain cerebellum section stained with chicken pAb to Myelin Basic Protein (MBP), (34-1071), dilution 1:5,000 in green, and costained with rabbit pAb to NF-L, (34-1083), dilution 1:5,000 in red. The MBP antibody stains oligodendrocytes and myelin sheathes around axons, while the NF-L antibody labels dendrites and axons of neuronal cells.

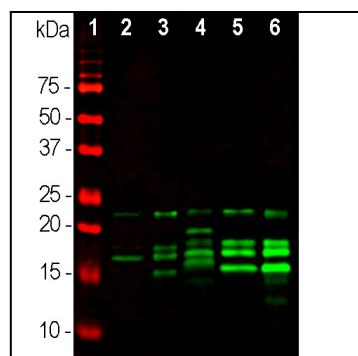


Figure-2: Western blot analysis of different tissue lysates using chicken pAb to MBP, (34-1071), dilution 1:10,000 in green: [1] protein standard (red), [2] rat brain, [3] rat spinal cord, [4] rat sciatic nerve, [5] mouse brain, and [6] mouse spinal cord. Multiple bands between 14-21.5kDa correspond to various alternate transcripts of the single MBP gene.