

34-1073: Monoclonal Antibody to Myelin Basic Protein, MBP(Clone: 7D2)

Clonality :	Monoclonal
Clone Name :	7D2
Application :	WB, IF/ICC, IHC
Reactivity :	Human, Rat, Mouse, Cow, Pig, Horse
Gene :	MBP
Gene ID :	4155
Uniprot ID :	P02686
Format :	Ascites
Alternative Name :	Myelin A1 protein,Myelin membrane encephalitogenic protein
Isotype :	Mouse, IgG1
Immunogen Information :	Purified myelin basic protein isolated from cow nerve.

Product Info

Amount :	50 µl / 100 µl
Content :	Antibody is supplied as an aliquot of ascites fluid
Storage condition :	Store the antibody at 4°C; stable for 6 months. For long-term storage; store at -20°C. Avoid repeated freeze and thaw cycles.

Application Note

WB: 1:5,000-1:10,000. IF/ICC and IHC: 1:2,000-5,000.

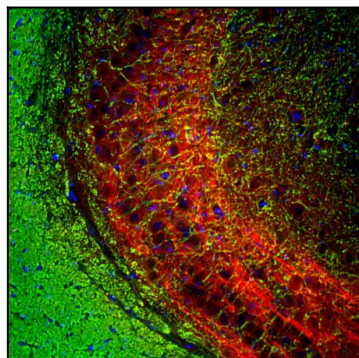


Figure-1: Immunofluorescent analysis of rat brain hippocampal section stained with mouse mAb to myelin basic protein (MBP),(34-1073), dilution 1:5,000 in green, and costained with rabbit pAb to NF-M, (34-1086), dilution 1:2,000, in red. The MBP antibody stains myelin sheathes around axons, while the NF-M antibody labels dendrites and axons of neuronal cells.

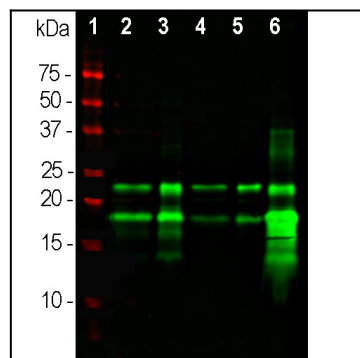


Figure-2: Western blot analysis of different tissue lysates using mouse mAb to MBP,(34-1073), dilution 1:10,000 in green: [1] protein standard (red), [2] rat brain, [3] rat spinal cord, [4] mouse brain, [5] mouse spinal cord, [6] cow spinal cord. Bands at 21.5kDa and 18.5kDa are the two larger transcripts from the MBP gene, showing that the epitope of this antibody depends on the sequence encoded by exon 2.