

34-1080: Polyclonal Antibody to Neurofilament NF-H

Clonality :	Polyclonal
Application :	WB, IF/ICC, IHC, ELISA
Reactivity :	Human, Rat, Mouse, Cow, Pig, Dog, Horse
Gene :	NEFH
Gene ID :	4744
Uniprot ID :	P12036
Format :	Conc. IgY prep.
Alternative Name :	200 kDa neurofilament protein, Neurofilament triplet H protein
Isotype :	Chicken, IgY
Immunogen Information :	Native NF-H purified from bovine spinal cord.

Product Info

Amount :	25 µl / 50 µl
Content :	Antibody is supplied as an aliquot of concentrated IgY prep.
Storage condition :	Store the antibody at 4°C; stable for 6 months. For long-term storage; store at -20°C. Avoid repeated freeze and thaw cycles.

Application Note

WB: 1:20,000-1:50,000. IF/ICC, IHC: 1:20,000.

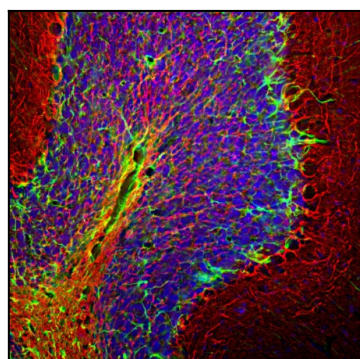


Figure-1: Immunohistological analysis of a rat cerebellum section stained with chicken pAb to NF-H, (34-1080), dilution 1:5,000 in red, and costained with rabbit pAb to GFAP, (34-1042), dilution 1:5,000 in green. The blue is DAPI staining of nuclear DNA. Following transcardial perfusion with 4% paraformaldehyde, brain was post fixed for 24 hours, cut to 45µm, and free floating sections were stained with above antibodies. The NF-H antibody labels network of axons of different neurons, while the GFAP antibody stains astrocytes and other glial cells.

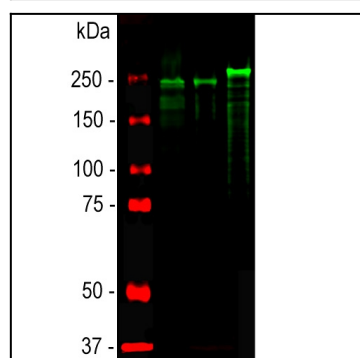


Figure-2: Western blot analysis of spinal cord lysates from different species using chicken pAb to NF-H, (34-1080), dilution 1:20,000 in green: [1] protein standard (red), [2] rat, [3] mouse, and [4] cow spinal cord. Strong band at about 200-220kDa corresponds to the phosphorylated form of NF-H. The protein from different species is known to have different SDS-PAGE molecular weights, with large species generally expressing larger proteins. Smaller proteolytic fragments of NF-H are also detected in spinal cord preparations with this antibody. The antibody does not recognize non-phosphorylated forms of NF-H (not shown, but see reference 1).