

34-1082: Monoclonal Antibody to Neurofilament NF-L (Clone: 7D1)

Clonality :	Monoclonal
Clone Name :	7D1
Application :	WB, IF/ICC, IHC
Reactivity :	Human, Rat, Mouse, Cow, Pig, Horse
Gene :	NEFL
Gene ID :	4747
Uniprot ID :	P07196
Format :	Ascites
Alternative Name :	68 kDa neurofilament protein, Neurofilament triplet L protein
Isotype :	Mouse, IgG2b
Immunogen Information :	Pig full length protein purified from spinal cord

Product Info

Amount :	50 µl / 100 µl
Content :	Antibody is supplied as an aliquot of 1 mg/ml of affinity purified antibody or ascites fluid
Storage condition :	Store the antibody at 4°C; stable for 6 months. For long-term storage; store at -20°C. Avoid repeated freeze and thaw cycles.

Application Note

WB: 1:5,000-1:10,000. IF/ICC and IHC: 1:100-1:500.

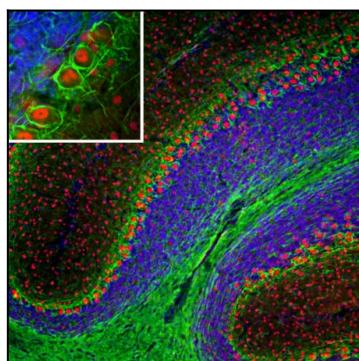


Figure-1: Immunofluorescent analysis of a section of mouse cerebellum stained with mouse mAb to NF-L, (34-1082), dilution 1:5,000 in green, and costained with chicken pAb to FOX2, dilution 1:2,000 in red. The blue is Hoechst staining of nuclear DNA. Following transcardial perfusion of mouse with 4% paraformaldehyde, brain was post fixed for 24 hours, cut to 45 µm, and free-floating sections were stained with above antibodies. NF-L antibody labels dendrites and axons of neuronal cells predominantly axons in white matter and basket cell axons associated with Purkinje cells. The FOX2 antibody reveals protein expressed in a subset of neurons, including the Purkinje cells.

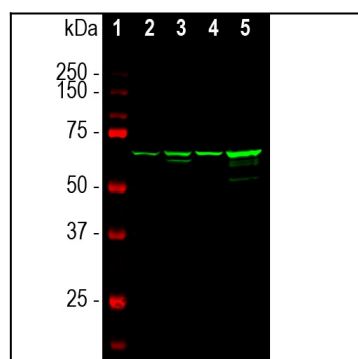


Figure-2: Western blot analysis of different tissue lysates using mouse mAb to NF-L, (34-1082), dilution 1:5,000 in green: [1] protein standard (red), [2] rat brain, [3] rat spinal cord, [4] mouse brain, and [5] mouse spinal cord. The strong band at 68kDa corresponds to the NF-L protein.