

## 34-1102: Polyclonal Antibody to Peripherin

<b>Clonality :</b>	Polyclonal
<b>Application :</b>	WB, IF/ICC, IHC
<b>Reactivity :</b>	Human, Rat, Mouse, Pig, Cow
<b>Gene :</b>	PRPH
<b>Gene ID :</b>	5630
<b>Uniprot ID :</b>	P41219
<b>Format :</b>	Sera
<b>Alternative Name :</b>	Neurofilament 4
<b>Isotype :</b>	Rabbit, IgG
<b>Immunogen Information :</b>	Recombinant human peripherin expressed in and purified from E. coli

### Product Info

<b>Amount :</b>	50 µl / 100 µl
<b>Content :</b>	Antibody is supplied as an aliquot of serum
<b>Storage condition :</b>	Store the antibody at 4°C; stable for 6 months. For long-term storage; store at -20°C. Avoid repeated freeze and thaw cycles.

### Application Note

WB: 1:1,000-1:2,000. IF/ICC and IHC: 1:2,000.

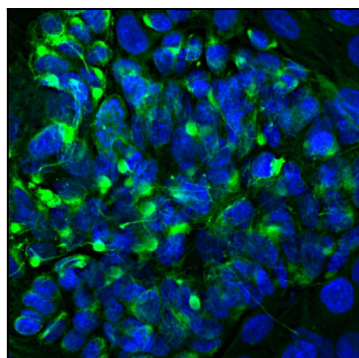


Figure-1: Immunofluorescent analysis of the widely used rat pheochromocytoma PC 12 cell line stained with rabbit polyclonal antibody to peripherin,(34-1102), dilution 1:2,000, in green. The blue is Hoechst staining of nuclear DNA. Peripherin, one of the Class III family of intermediate filament subunit proteins, is a major component of the PC12 cell forming a perinuclear cap, with some filaments visible in the cytoplasm.

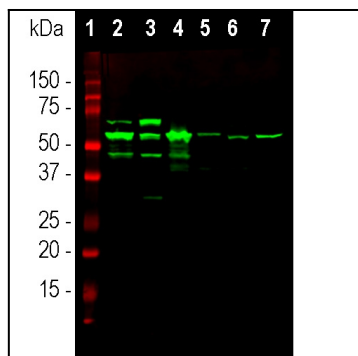


Figure-2: Western blot analysis of tissue and cell lysates using rabbit pAb to peripherin,(34-1102), dilution 1:10,000 in green: [1] protein standard, [2] rat spinal cord, [3] mouse spinal cord, [4] pig spinal cord, [5] cow spinal cord, [6] SH-SY5Y cells and [7] PC12 cells. The major band at ~57kDa corresponds to the major peripherin protein isoform, while other bands presumably represent protein products of alternate transcripts of the peripherin gene.