

34-1104: Polyclonal Antibody to Pin1(Discontinued)

Clonality :	Polyclonal
Application :	IHC,WB
Reactivity :	Pig,Rat,Mouse,Human,Bovine
Gene :	PIN1
Gene ID :	5300
Uniprot ID :	Q13526
Format :	Conc. IgY prep.
Alternative Name :	Peptidyl-prolyl cis-trans isomerase Pin1, Rotamase Pin1
Isotype :	Chicken, IgY
Immunogen Information :	Recombinant full length Pin-1 purified from E. coli

Product Info

Amount :	100 μ l
Content :	Antibody is supplied as an aliquot of concentrated IgY prep.
Storage condition :	Store the antibody at 4°C; stable for 6 months. For long-term storage; store at -20°C. Avoid repeated freeze and thaw cycles.

Application Note

Western blot: 1:20,000. ICC/IF and IHC: 1:2,000.

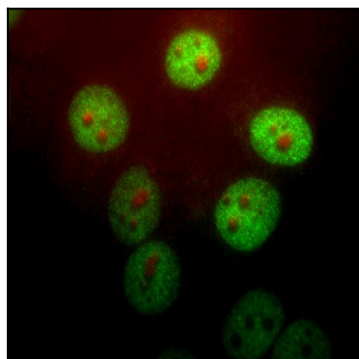


Figure 1: HeLa cells stained with 34-1104 antibody to Pin-1 (1:1,000 dilution, green) and monoclonal to fibrillarin, 34-1031 (red). Pin-1 stains the nuclear matrix and, much more faintly, the cytoplasm. The fibrillarin antibody marks nucleoli.

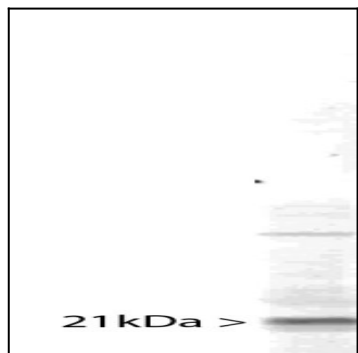


Figure 2: Western blot of whole HeLa cell homogenate stained with 34-1104, at dilution of 1:10,000. A prominent band running with an apparent SDS-PAGE molecular weight of ~21 kDa corresponds to Pin1.