

34-1107: Monoclonal Antibody to Rhodopsin (Clone: B630)

Clonality :	Monoclonal
Clone Name :	B630
Application :	WB, IF/ICC, IHC
Reactivity :	Human, Rat, Mouse, Cow, Pig, Horse
Gene :	RHO
Gene ID :	6010
Uniprot ID :	P08100
Format :	Purified
Alternative Name :	Opsin-2
Isotype :	Mouse, IgG1
Immunogen Information :	Purified bovine rhodopsin

Product Info

Amount :	50 µl / 100 µl
Content :	Antibody is supplied as an aliquot of 1 mg/ml of affinity purified antibody
Storage condition :	Store the antibody at 4°C; stable for 6 months. For long-term storage; store at -20°C. Avoid repeated freeze and thaw cycles.

Application Note

WB:1:5,000, IF/ICC and IHC: 1:1,000.

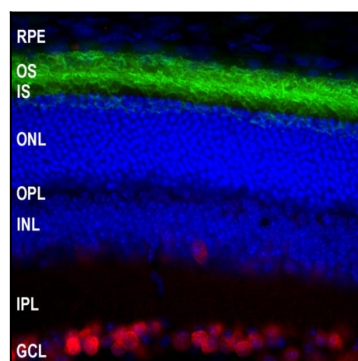


Figure-1: Immunofluorescent analysis of mouse retina section stained with mouse mAb to rhodopsin,(34-1107), dilution 1:2,000, in green, and costained with rabbit pAb to Fox3/NeuN,(34-1036), dilution 1:5,000 in red. The blue is Hoechst staining of nuclear DNA. Rhodopsin antibody reveals the rod cell membranes located in photoreceptor outer segments (OS) layer of the retina. The Fox3/NeuN antibody selectively stains the nuclei and cytoplasm of neuronal cells in the ganglion cell layer (GCL), but does not stain most neurons in the layers between.

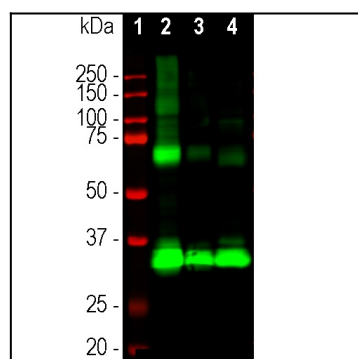


Figure-2: Western blot analysis of retina lysates from different species using mouse mAb to rhodopsin,(34-1107), dilution 1:5,000 in green: [1] protein standard (red), [2] rat [3] mouse and [4] cow retina lysates. The strong band at 35kDa corresponds to rhodopsin protein. Bands at about 70kDa and 140kDa are presumably aggregated forms of rhodopsin.