

34-1110: Monoclonal Antibody to Alpha-synuclein (Clone: 2A7)

Clonality :	Monoclonal
Clone Name :	2A7
Application :	WB, IF/ICC, IHC
Reactivity :	Human, Rat, Mouse, Cow, Pig
Gene :	SNCA
Gene ID :	6622
Uniprot ID :	P37840
Format :	Purified
Alternative Name :	Non-A beta component of AD amyloid,NACP,Non-A4 component of amyloid precursor
Isotype :	Mouse, IgG1
Immunogen Information :	Full length human protein with the epitope from amino acids 61-95

Product Info

Amount :	50 µl / 100 µl
Content :	Antibody is supplied as an aliquot of 1 mg/ml of affinity purified antibody.
Storage condition :	Store the antibody at 4°C; stable for 6 months. For long-term storage; store at -20°C. Avoid repeated freeze and thaw cycles.

Application Note

WB:1:1,000 IF/ICC: 1:1,000

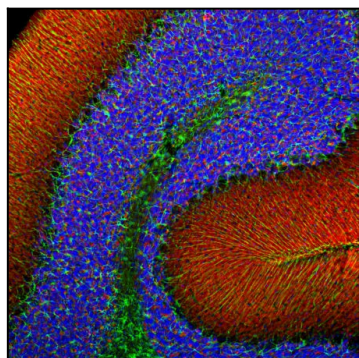


Figure-1: Immunofluorescent analysis of rat cerebellum section stained with mouse mAb to α -synuclein (34-1110), dilution 1:1,000, in red, and costained with rabbit pAb to GFAP (34-1042) dilution 1:5,000 in green. The blue is Hoechst staining of nuclear DNA. Following transcardial perfusion of rat with 4% paraformaldehyde, brain was post fixed for 24 hours, cut to 45µM, and free-floating sections were stained with above antibodies. The α -synuclein protein is concentrated in synaptic regions, while the GFAP antibody stains the filamentous cytoskeleton of Bergmann glia and astrocytic cells.

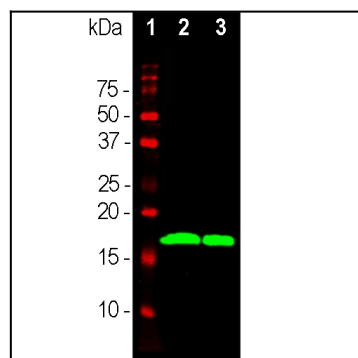


Figure-2: Western blot analysis of different tissue lysates using mAb to α -synuclein (34-1110), dilution 1:1,000 in green. [1] protein standard in red, [2] whole rat brain lysate, [3] rat spinal cord lysate. The strong band at about 15kDa corresponds to α -synuclein protein.