

34-1111: Monoclonal Antibody to Alpha-synuclein (Clone: 3H9)(Discontinued)

Clonality :	Monoclonal
Clone Name :	3H9
Application :	WB,IF/ICC,IHC
Reactivity :	Human,Bovine,Pig,Mouse,Rat
Gene :	SNCA
Gene ID :	6622
Uniprot ID :	P37840
Format :	Purified
Alternative Name :	Non-A beta component of AD amyloid,NACP,Non-A4 component of amyloid precursor
Isotype :	Mouse, IgG1
Immunogen Information :	Full length human protein with the epitope from amino acids 61-95

Product Info

Amount :	100 µl
Content :	Antibody is supplied as an aliquot of 1 mg/ml of affinity purified preparation.
Storage condition :	Store the antibody at 4°C; stable for 6 months. For long-term storage; store at -20°C. Avoid repeated freeze and thaw cycles.

Application Note

Western blot:1:1,000 IF/ICC and IHC: 1:1,000

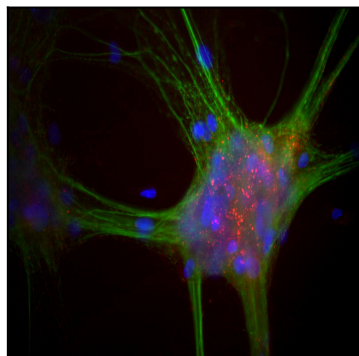


Figure 1: Mixed neuron-glia cultures stained with 34-1111 , our monoclonal antibody to alpha-synuclein (red) and chicken polyclonal antibody to MAP2 34-1064 (green). The alpha-synuclein antibody stains vesicular structures the perikarya and processes of the neurons in this image.

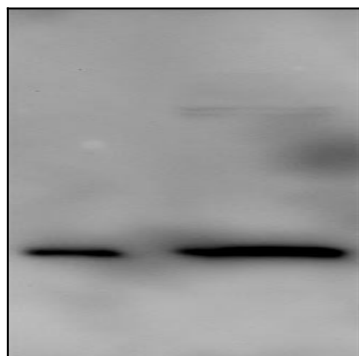


Figure 2: Blots of 34-1111 on recombinant alpha-synuclein (left lane) and crude extract of mouse brain (right lane, courtesy Rogan Tinsley, Howard Florey Institute, University of Melbourne).