

### 34-1114: Monoclonal Antibody to Tar DNA binding protein 43(Clone: 3H8)

<b>Clonality :</b>	Monoclonal
<b>Clone Name :</b>	3H8
<b>Application :</b>	WB, IF/ICC, IHC
<b>Reactivity :</b>	Human, Rat, Mouse, Cow, Pig, Horse
<b>Gene :</b>	TARDBP
<b>Gene ID :</b>	23435
<b>Uniprot ID :</b>	Q13148
<b>Format :</b>	Purified
<b>Isotype :</b>	Mouse, IgG1
<b>Immunogen Information :</b>	Full length recombinant human TDP43 expressed in and purified from E. coli

#### Product Info

<b>Amount :</b>	50 µl / 100 µl
<b>Content :</b>	Antibody is supplied as an aliquot of 1 mg/ml of affinity purified antibody
<b>Storage condition :</b>	Store the antibody at 4°C; stable for 6 months. For long-term storage; store at -20°C. Avoid repeated freeze and thaw cycles.

#### Application Note

WB: 1:5,000. ICC/IF and IHC 1:1,000

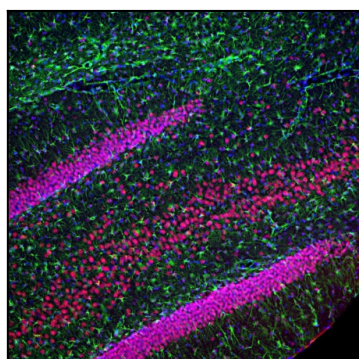


Figure-1: Immunofluorescent analysis of rat hippocampus section stained with mouse mAb to TDP43,(34-1114), dilution 1:2,000 in red, and costained with chicken pAb to GFAP,(34-1046), dilution 1:5,000 in green. The blue is DAPI staining of nuclear DNA. Following transcardial perfusion of rat with 4% paraformaldehyde, brain was post fixed for 24 hours, cut to 45µm, and free-floating sections were stained with above antibodies. The TDP43 protein is concentrated in the nuclei of hippocampal neurons, while the GFAP antibody stains the intermediate filament network of astroglial cells.

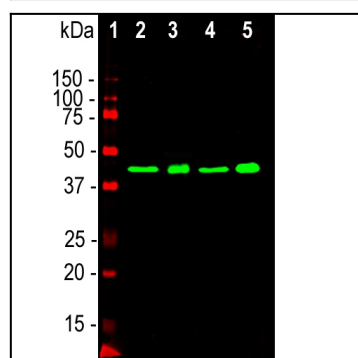


Figure-2: Western blot analysis of whole brain lysates and nuclear extract from whole brain using mouse mAb to TDP43,(34-1114), dilution 1:2,000 in green: [1] protein standard (red), [2] rat brain, [3] rat brain nuclear extract, [4] mouse brain, [5] mouse brain nuclear extract. Strong band at the 43kDa mark visible both in whole brain and in the nuclear extract corresponds to TDP43 protein.