

### 34-1120: Monoclonal Antibody to Ubiquitin(Clone: Ubi-1)(Discontinued)

|                                |  |
|--------------------------------|--|
| <b>Clonality :</b>             | Monoclonal   |
| <b>Clone Name :</b>            | Ubi-1  |
| <b>Application :</b>           | IHC,WB   |
| <b>Reactivity :</b>            | Pig,Rat,Mouse,Human,Bovine                               |
| <b>Gene :</b>                  | UBB, UBC   |
| <b>Gene ID :</b>               | 7314   |
| <b>Uniprot ID :</b>            | P0CG47   |
| <b>Format :</b>                | Purified   |
| <b>Isotype :</b>               | Mouse, IgG1  |
| <b>Immunogen Information :</b> | Purified ubiquitin conjugated with glutaraldehyde to KLH |

#### Product Info

|                            |   |
|----------------------------|---|
| <b>Amount :</b>            | 100 µl  |
| <b>Content :</b>           | Antibody is supplied as an aliquot of 1 mg/ml of affinity purified antibody or ascites fluid.                                 |
| <b>Storage condition :</b> | Store the antibody at 4°C; stable for 6 months. For long-term storage; store at -20°C. Avoid repeated freeze and thaw cycles. |

#### Application Note

Western blot: 1:1,000. IF/ICC and IHC: 1:1,000.

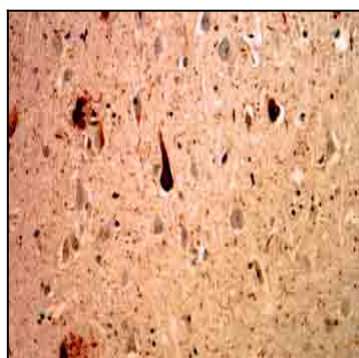


Figure 1: 34-1120 staining of cerebral cortex of an Alzheimer patient. Neurofibrillary tangles and dystrophic neurites associated with senile plaques stain strongly with this antibody. In the center is a typical neurofibrillary tangle containing neuron.

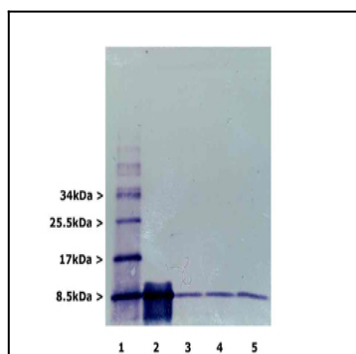


Figure 2: Blots of mono and polyubiquitin (lane 1), monoubiquitin only (2), and 100 µg total wet weight of cerebellum , cortex and brain stem respectively (lane 3-5). Material was run out on 20% SDS-PAGE and transferred electrophoretically to PVDF.