

34-1131: Monoclonal Antibody to Visinin-like protein 1 (Clone: 3A9)

Clonality :	Monoclonal
Clone Name :	3A9
Application :	WB, IF/ICC, IHC
Reactivity :	Human, Rat, Mouse, Cow, Pig
Gene :	VSNL1
Gene ID :	7447
Uniprot ID :	P62760
Format :	Purified
Alternative Name :	Hippocalcin-like protein 3
Isotype :	Mouse, IgG1
Immunogen Information :	Recombinant full length human protein

Product Info

Amount :	50 µl / 100 µl
Content :	Antibody is supplied as an aliquot of 1 mg/ml of affinity purified antibody.
Storage condition :	Store the antibody at 4°C; stable for 6 months. For long-term storage; store at -20°C. Avoid repeated freeze and thaw cycles.

Application Note

WB: 1,000-2,000. IF/IHC: 1:500-1,000.

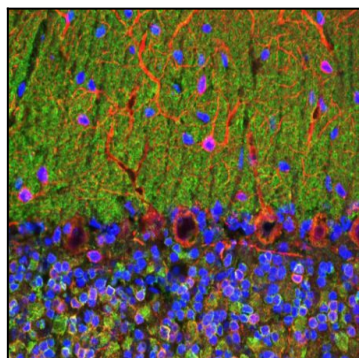


Figure-1: Confocal image of adult rat cerebellum stained with mouse mAb to visinin-like protein 1 (VLP1), (34-1131), dilution 1:1,000, in green, and costained with chicken pAb to MAP2, (34-1064), dilution 1:10,000, in red. The blue is DAPI staining of nuclear DNA. The (34-1131) antibody reveals perikarya and synaptic regions in the neuron rich granular layer (bottom) and synapse rich molecular layer (top). Note that the large prominent Purkinje neurons at the junction of these two layers do not stain with the (34-1131) antibody, in line with the findings of others (4).

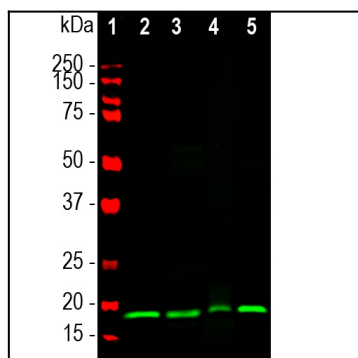


Figure-2: Western blot analysis of different tissue lysates using mouse mAb to visinin-like protein 1 (VLP1), (34-1131), dilution 1:1,000, in green: [1] protein standard (red), [2] rat brain, [3] mouse brain, [4] pig hippocampus, and [5] cow cerebellum. The band at about 20kDa corresponds to the VLP1 protein.