

## 10-9506: Recombinant Rabbit Monoclonal Antibody to Mouse IgG2a (Clone: RM219)(Discontinued)

<b>Clonality :</b>	Monoclonal
<b>Clone Name :</b>	RM219
<b>Application :</b>	WB,IP,ICC,IHC,FACS,ELISA
<b>Reactivity :</b>	Mouse
<b>Gene :</b>	Ighg
<b>Gene ID :</b>	380793
<b>Uniprot ID :</b>	P01863
<b>Format :</b>	Purified
<b>Isotype :</b>	Rabbit IgG
<b>Immunogen Information :</b>	Mouse IgG2a

### Product Info

<b>Amount :</b>	100 µg
<b>Purification :</b>	Protein A affinity purified from an animal origin-free culture supernatant
<b>Content :</b>	1 mg/ml in 50% Glycerol/PBS with 1% BSA and 0.09% sodium azide
<b>Storage condition :</b>	Store at -20°C. Avoid repeated freeze and thaw cycles.

### Application Note

Clone RM219 reacts to the Fc region of mouse IgG2a. No cross reactivity with mouse IgG1, IgG2b, IgG2c, IgG3, IgM, IgA, IgE, human IgG, or rat IgG. ELISA: 0.005 Åµg/ml Å– 0.2 Åµg/ml; Immunocytochemistry (ICC): 0.5 Åµg/ml-2 Åµg/ml; Immunohistochemistry (IHC): 0.5 Åµg/ml-2 Åµg/ml; Western Blot (WB): 0.5 Åµg/ml-2 Åµg/ml.

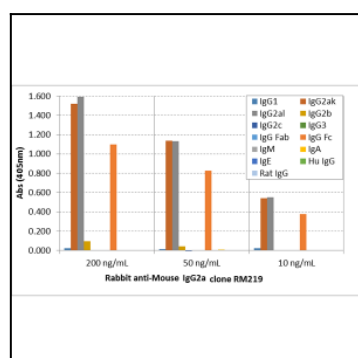


Figure 1: ELISA of mouse immunoglobulins shows Clone: RM219 reacts to the Fc region of mouse IgG2a; no cross reactivity with IgG1, IgG2b, IgG2c, IgG3, IgM, IgA,IgE, human IgG, or rat IgG. The plate was coated with 50 ng/well of different immunoglobulins. 200 ng/ml, 50 ng/ml, or 10 ng/ml of Clone: RM219 was used as the primary antibody. An alkaline phosphatase conjugated anti-rabbit IgG as the secondary antibody.

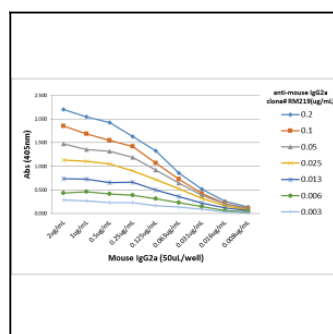


Figure 2: A titration ELISA of mouse IgG2a. The plate was coated with different amounts of mouse IgG2a. A serial dilution of Clone: RM219 was used as the primary antibody. An alkaline phosphatase conjugated anti-rabbit IgG as the secondary antibody.

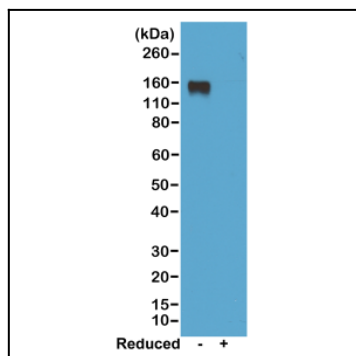


Figure 3: Western blot of nonreduced(-) and reduced(+) mouse IgG2a, using 0.5 µg/ml of Clone: RM219. This antibody reacts to nonreduced IgG2a (~150 kDa).