

## 10-9508: Recombinant Rabbit Monoclonal Antibody to Mouse IgG3 (Clone: RM218)(Discontinued)

<b>Clonality :</b>	Monoclonal
<b>Clone Name :</b>	RM218
<b>Application :</b>	IP, ICC, ELISA, IHC, FACS, WB
<b>Reactivity :</b>	Mouse
<b>Gene ID :</b>	380795
<b>Uniprot ID :</b>	P03987
<b>Format :</b>	Purified
<b>Isotype :</b>	Rabbit IgG
<b>Immunogen Information :</b>	Mouse IgG3

### Product Info

<b>Amount :</b>	50 µg
<b>Purification :</b>	Protein A affinity purified from an animal origin-free culture supernatant
<b>Content :</b>	1 mg/ml in 50% Glycerol/PBS with 1% BSA and 0.09% sodium azide
<b>Storage condition :</b>	Store at -20°C. Avoid repeated freeze and thaw cycles.

### Application Note

Clone RM218 reacts to the Fab region of mouse IgG3. No cross reactivity with mouse IgG1, IgG2a, IgG2b, IgM, IgA, IgE, human IgG, or rat IgG. ELISA: 0.005 µg/ml-0.2 µg/ml; Immunocytochemistry (ICC): 0.5 µg/ml-2 µg/ml; Immunohistochemistry (IHC): 0.5 µg/ml-2 µg/ml; Western Blot (WB): 0.1 µg/ml-0.5 µg/ml.

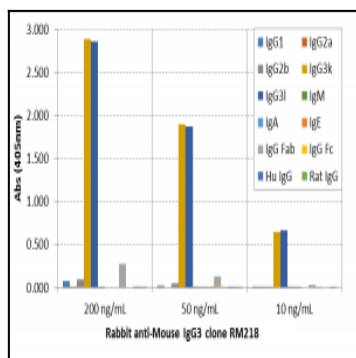


Figure 1: ELISA of mouse immunoglobulins shows Clone: RM218 reacts to both mouse IgG3 Kappa and IgG3 Lambda ; No crossreactivity with mouse IgG1, IgG2a, IgG2b, IgM, IgA, IgE, human IgG, or rat IgG. The plate was coated with 50 ng/well of different immunoglobulins. 200 ng/ml, 50 ng/ml, or 10 ng/ml of Clone: RM218 was used as the primary antibody. An alkaline phosphatase conjugated anti-rabbit IgG as the secondary antibody.

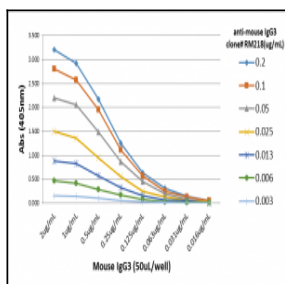


Figure 2: A titration ELISA of mouse IgG3. The plate was coated with different amounts of mouse IgG3. A serial dilution of Clone: RM218 was used as the primary antibody. An alkaline phosphatase conjugated anti-rabbit IgG as the secondary antibody.