

## 10-9509: Recombinant Rabbit Monoclonal Antibody to Mouse IgA (Clone: RM220)(Discontinued)

<b>Clonality :</b>	Monoclonal
<b>Clone Name :</b>	RM220
<b>Application :</b>	IP, ICC, ELISA, IHC, FACS, WB
<b>Reactivity :</b>	Mouse
<b>Gene ID :</b>	238447
<b>Uniprot ID :</b>	P01878
<b>Format :</b>	Purified
<b>Isotype :</b>	Rabbit IgG
<b>Immunogen Information :</b>	Mouse IgA

### Product Info

<b>Amount :</b>	100 µg
<b>Purification :</b>	Protein A affinity purified from an animal origin-free culture supernatant
<b>Content :</b>	1 mg/ml in 50% Glycerol/PBS with 1% BSA and 0.09% sodium azide
<b>Storage condition :</b>	Store at -20°C. Avoid repeated freeze and thaw cycles.

### Application Note

Clone RM220 specifically reacts to mouse IgA. No cross reactivity with mouse IgG1, IgG2a, IgG2b, IgG2c, IgG3, IgM, IgE, or human IgA. ELISA: 0.005 µg/ml  $\rightarrow$  0.2 µg/ml; Immunocytochemistry (ICC): 0.5 µg/ml-2 µg/ml; Immunohistochemistry (IHC): 0.5 µg/ml-2 µg/ml; Western Blot (WB): 0.5 µg/ml-2 µg/ml.

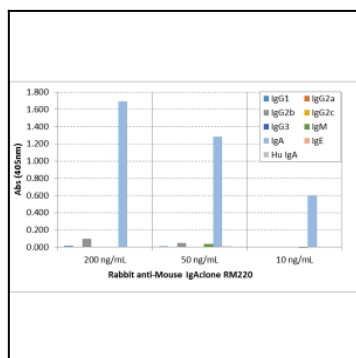


Figure 1: ELISA of mouse immunoglobulins shows Clone: RM220 reactsto mouse IgA. No cross reactivity with mouse IgG1, IgG2a,IgG2b, IgG2c, IgG3, IgM, IgE, or human IgA. The plate was coated with 50 ng/well of different immunoglobulins. 200 ng/ml, 50 ng/ml, or 10 ng/ml of Clone: RM220 was used as the primary antibody. An alkaline phosphatase conjugated anti-rabbit IgG as the secondary antibody.

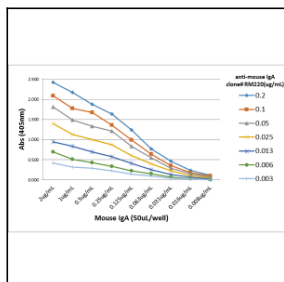


Figure 2: A titration ELISA of mouse IgA. The plate was coated with different amount of mouse IgA. A serial dilution of Clone: RM220 was used as the primary antibody. An alkaline phosphatase conjugated anti-rabbit IgG as the secondary antibody.

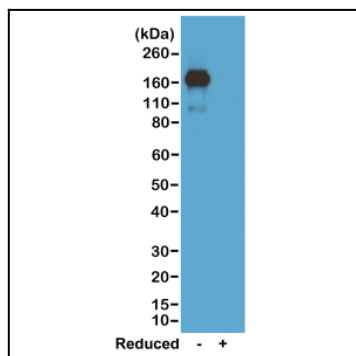


Figure 3: Western blot of nonreduced(-) and reduced(+) mouse IgA, using 0.5 µg/ml of Clone: RM220. This antibody reacts to nonreduced IgA.