

10-9509-B: Biotinylated Recombinant Rabbit Monoclonal Antibody to Mouse IgA (Clone: RM220)(Discontinued)

Clonality :	Monoclonal
Clone Name :	RM220
Application :	IP, ICC, ELISA, IHC, FACS, WB
Reactivity :	Mouse
Conjugate :	Biotin
Gene ID :	238447
Uniprot ID :	P01878
Format :	Purified
Isotype :	Rabbit IgG
Immunogen Information :	Mouse IgA

Product Info

Amount :	50 µg
Purification :	Protein A affinity purified from an animal origin-free culture supernatant
Content :	1 mg/ml in 50% Glycerol/PBS with 1% BSA and 0.09% sodium azide
Storage condition :	Store at -20°C. Avoid repeated freeze and thaw cycles.

Application Note

Clone RM220 specifically reacts to mouse IgA. No cross reactivity with mouse IgG1, IgG2a, IgG2b, IgG2c, IgG3, IgM, IgE, or human IgA. ELISA: 0.005 µg/ml ~ 0.2 µg/ml; Immunocytochemistry (ICC): 0.5 µg/ml-2 µg/ml; Immunohistochemistry (IHC): 0.5 µg/ml-2 µg/ml; Western Blot (WB): 0.5 µg/ml-2 µg/ml.

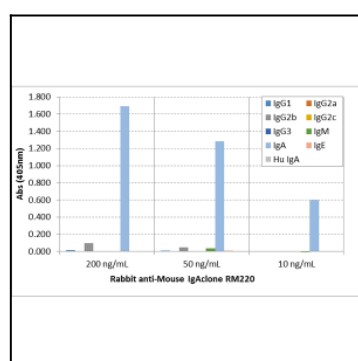


Figure 1: ELISA of mouse immunoglobulins shows Clone: RM220 reactsto mouse IgA. No cross reactivity with mouse IgG1, IgG2a, IgG2b, IgG2c, IgG3, IgM, IgE, or human IgA. The plate was coated with 50 ng/well of different immunoglobulins. 200 ng/ml, 50 ng/ml, or 10 ng/ml of Clone: RM220 was used as the primary antibody. An alkaline phosphatase conjugated anti-rabbit IgG as the secondary antibody.

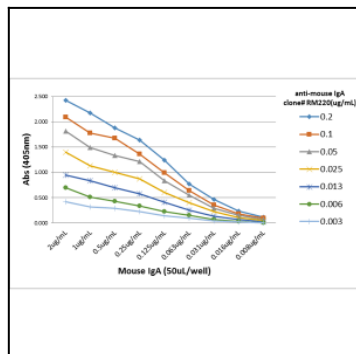


Figure 2: A titer ELISA of mouse IgA. The plate was coated with different amount of mouse IgA. A serial dilution of Clone: RM220 was used as the primary antibody. An alkaline phosphatase conjugated anti-rabbit IgG as the secondary antibody.

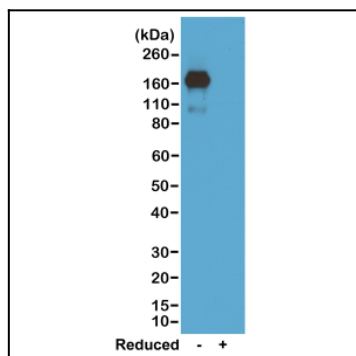


Figure 3: Western blot of nonreduced(-) and reduced(+) mouse IgA, using 0.5 μ g/ml of Clone: RM220. This antibody reacts to nonreduced IgA.