

10-9510-B: Biotinylated Recombinant Rabbit Monoclonal Antibody to Mouse IgM (Clone: RM109)(Discontinued)

Clonality :	Monoclonal
Clone Name :	RM109
Application :	IP,ELISA,ICC/IF,IHC,FACS
Reactivity :	Mouse
Conjugate :	Biotin
Gene :	Ighm
Gene ID :	16019
Format :	Purified
Alternative Name :	Ighm,Igh-6
Isotype :	Rabbit IgG
Immunogen Information :	Mouse IgM

Product Info

Amount :	50 µg
Purification :	Protein A affinity purified from an animal origin-free culture supernatant
Content :	1 mg/ml in 50% Glycerol/PBS with 1% BSA and 0.09% sodium azide
Storage condition :	Store at -20°C. Avoid repeated freeze and thaw cycles.

Application Note

Clone RM109 reacts to mouse IgM. No cross reactivity with mouse IgG1, IgG2a, IgG2b, IgG3, IgA, IgE, human IgG, rat IgG, or goat IgG. ELISA: 0.005 µg/ml – 0.2

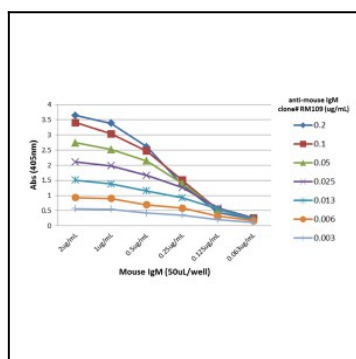


Figure 1: A titer ELISA of mouse IgM. The plate was coated with different amounts of mouse IgM. A serial dilution of Clone: RM109 was used as the primary

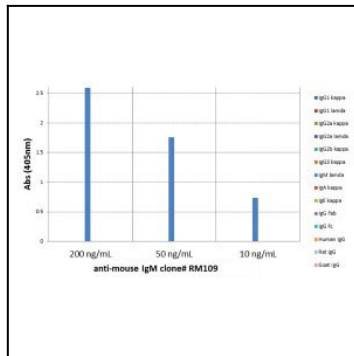


Figure 2: ELISA of mouse immunoglobulins shows Clone: RM109 reacts to mouse IgM; no cross reactivity with IgG1, IgG2a, IgG2b, IgG3, IgA, IgE, human IgG, rat IgG, or goat IgG. The plate was coated with 50 ng/well of different immunoglobulins. 200 ng/mL, 50 ng/mL, or 10 ng/mL of Clone: RM109 was used as the primary antibody. An alkaline phosphatase conjugated anti-rabbit IgG as the secondary antibody.