

10-9513: Recombinant Goat Monoclonal Antibody to Rabbit IgG Fc (Clone: RMG02)(Discontinued)

Clonality :	Monoclonal
Clone Name :	RMG02
Application :	WB,IP,ICC,IHC,FACS,ELISA
Reactivity :	Rabbit
Format :	Purified
Isotype :	Goat IgG
Immunogen Information :	Rabbit IgG

Product Info

Amount :	100 µg
Purification :	Protein G affinity purified from an animal origin \hat{A} -free culture supernatant
Content :	1 mg/ml in 50% Glycerol/PBS with 1% BSA and 0.09% sodium azide
Storage condition :	Store at -20°C. Avoid repeated freeze and thaw cycles.

Application Note

Clone RMG02 reacts to the Fc region of Rabbit IgG. No cross reactivity with human IgG, rat IgG, or mouse IgG. ELISA: 0.01 \hat{A} \hat{A} µg/ml \hat{A} \hat{A} 0.5 \hat{A} \hat{A} µg/ml; Immunocytochemistry (ICC): 0.5 \hat{A} \hat{A} µg/ml-2 \hat{A} \hat{A} µg/ml; Immunohistochemistry (IHC): 0.5 \hat{A} \hat{A} µg/ml-2 \hat{A} \hat{A} µg/ml; Western Blot (WB) (nonreduced): 0.1 \hat{A} \hat{A} µg/ml-0.5 \hat{A} \hat{A} µg/ml.

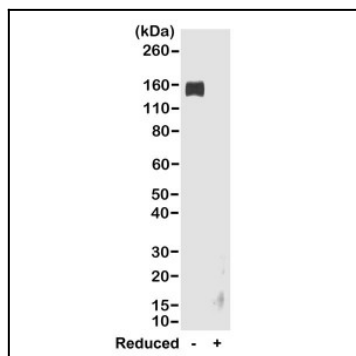


Figure 1: Western blot of nonreduced(-) and reduced(+) rabbit IgG (20ng/lane), using 0.2 µg/ml of Clone: RMG02. This antibody reacts to nonreduced rabbit IgG (~150 kDa).

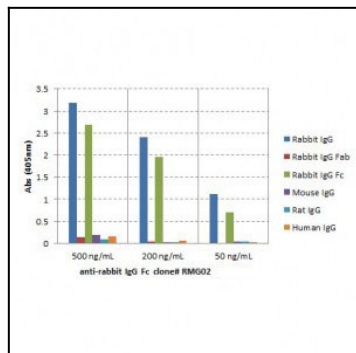


Figure 2: ELISA of IgGs from different species shows Clone: RMG02 reacts to the Fc region of rabbit IgG; no cross reactivity with human IgG, rat IgG, or mouse IgG. The plate was coated with 50 ng/well of different IgG. 500 ng/mL, 200 ng/mL, or 50 ng/mL of Clone: RMG02 was used as the primary antibody. An alkaline phosphatase conjugated anti-goat IgG as the secondary antibody.

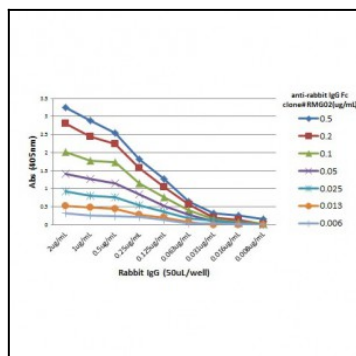


Figure 3: A titer ELISA of rabbit IgG. The plate was coated with different amounts of rabbit IgG. A serial dilution of Clone: RMG02 was used as the primary antibody. An alkaline phosphatase conjugated anti-goat IgG as the secondary antibody.