

## 10-9513-B: Biotinylated Recombinant Goat Monoclonal Antibody to Rabbit IgG Fc (Clone: RMG02)(Discontinued)

<b>Clonality :</b>	Monoclonal
<b>Clone Name :</b>	RMG02
<b>Application :</b>	WB,IP,ICC,IHC,FACS,ELISA
<b>Reactivity :</b>	Rabbit
<b>Conjugate :</b>	Biotin
<b>Format :</b>	Purified
<b>Isotype :</b>	Goat IgG
<b>Immunogen Information :</b>	Rabbit IgG

### Product Info

<b>Amount :</b>	50 µg
<b>Purification :</b>	Protein G affinity purified from an animal origin $\hat{A}$ -free culture supernatant
<b>Content :</b>	1 mg/ml in 50% Glycerol/PBS with 1% BSA and 0.09% sodium azide
<b>Storage condition :</b>	Store at -20°C. Avoid repeated freeze and thaw cycles.

### Application Note

Clone RMG02 reacts to the Fc region of Rabbit IgG. No cross reactivity with human IgG, rat IgG, or mouse IgG. ELISA: 0.01  $\hat{A}$ µg/ml  $\hat{A}$  0.5  $\hat{A}$ µg/ml; Immunocytochemistry (ICC): 0.5  $\hat{A}$ µg/ml-2  $\hat{A}$ µg/ml; Immunohistochemistry (IHC): 0.5  $\hat{A}$ µg/ml-2  $\hat{A}$ µg/ml; Western Blot (WB) (nonreduced): 0.1  $\hat{A}$ µg/ml-0.5  $\hat{A}$ µg/ml.

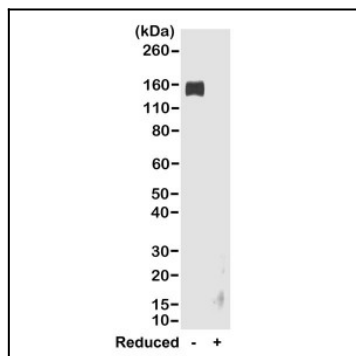


Figure 1: Western blot of nonreduced(-) and reduced(+) rabbit IgG (20ng/lane), using 0.2 µg/ml of Clone: RMG02. This antibody reacts to nonreduced rabbit IgG (~150 kDa).

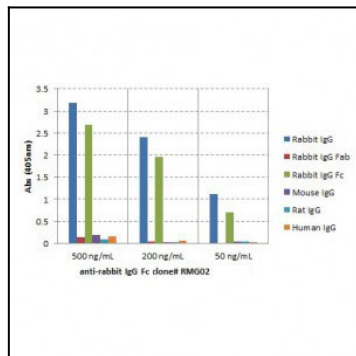


Figure 2: ELISA of IgGs from different species shows Clone: RMG02 reacts to the Fc region of rabbit IgG; no cross reactivity with human IgG, rat IgG, or mouse IgG. The plate was coated with 50 ng/well of different IgG. 500 ng/mL, 200 ng/mL, or 50 ng/mL of Clone: RMG02 was used as the primary antibody. An alkaline phosphatase conjugated anti-goat IgG as the secondary antibody.

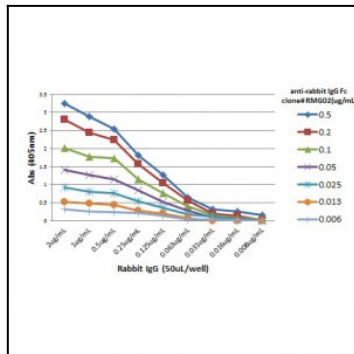


Figure 3: A titer ELISA of rabbit IgG. The plate was coated with different amounts of rabbit IgG. A serial dilution of Clone: RMG02 was used as the primary antibody. An alkaline phosphatase conjugated anti-goat IgG as the secondary antibody.