

## 10-9516: Recombinant Goat Monoclonal Antibody to Mouse IgG (Clone: RMG07)(Discontinued)

<b>Clonality :</b>	Monoclonal
<b>Clone Name :</b>	RMG07
<b>Application :</b>	IP, ICC, IHC, FACS, ELISA
<b>Reactivity :</b>	Mouse
<b>Gene :</b>	Ighg1
<b>Gene ID :</b>	16017
<b>Uniprot ID :</b>	P01868
<b>Format :</b>	Purified
<b>Isotype :</b>	Goat IgG
<b>Immunogen Information :</b>	Mouse IgG

### Product Info

<b>Amount :</b>	100 µg
<b>Purification :</b>	Protein G affinity purified from an animal origin-free culture supernatant
<b>Content :</b>	1 mg/ml in 50% Glycerol/PBS with 1% BSA and 0.09% sodium azide
<b>Storage condition :</b>	Store at -20°C. Avoid repeated freeze and thaw cycles.

### Application Note

Clone RMG07 antibody reacts to Mouse IgG, including IgG1, IgG2a, IgG2b, and IgG3. No cross reactivity with IgM, IgA, IgE, human IgG, rat IgG, or rabbit IgG. ELISA: 0.05 µg/ml ~ 1 µg/ml; ICC, IHC: 0.5 µg/ml ~ 2 µg/ml.

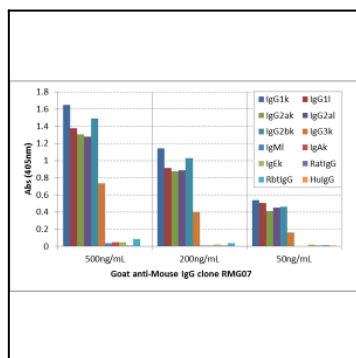


Figure 1: ELISA of mouse immunoglobulins shows Clone: RMG07 reacts to mouse IgG1, IgG2a, IgG2b, and IgG3; no cross reactivity with IgM, IgA, IgE, human IgG, rat IgG, and rabbit IgG. The plate was coated with 50 ng/well of different immunoglobulins. 500 ng/ml, 200 ng/ml, or 50 ng/ml of Clone: RMG07 was used as the primary antibody. An alkaline phosphatase conjugated anti-goat IgG as the secondary antibody.

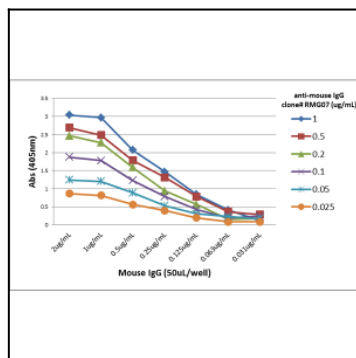


Figure 2: A titer ELISA of mouse IgG. The plate was coated with different amounts of mouse IgG. A serial dilution of Clone: RMG07 was used as the primary antibody. An alkaline phosphatase conjugated anti-goat IgG as the secondary antibody.