

10-9519: Recombinant Rabbit Monoclonal Antibody to Human Lambda light chain (Clone: RM127)(Discontinued)

Clonality :	Monoclonal
Clone Name :	RM127
Application :	ICC,IHC,FACS,ELISA
Reactivity :	Human
Gene :	IGLC1
Gene ID :	3537
Uniprot ID :	P0CG04
Format :	Purified
Alternative Name :	IGLC1
Isotype :	Rabbit IgG
Immunogen Information :	Human IgG

Product Info

Amount :	100 µg
Purification :	Protein A affinity purified from an animal origin-free culture supernatant
Content :	1 mg/ml in 50% Glycerol/PBS with 1% BSA and 0.09% sodium azide
Storage condition :	Store at -20°C. Avoid repeated freeze and thaw cycles.

Application Note

Clone RM127 reacts to the lambda light chain of human immunoglobulins. No cross reactivity with kappa light chain, mouse IgG, rat IgG, or goat IgG. ELISA: 0.05 µg/ml – 0.2 µg/ml; Immunocytochemistry (ICC): 0.5 µg/ml-2 µg/ml; Immunohistochemistry (IHC): 0.5 µg/ml-2 µg/ml.

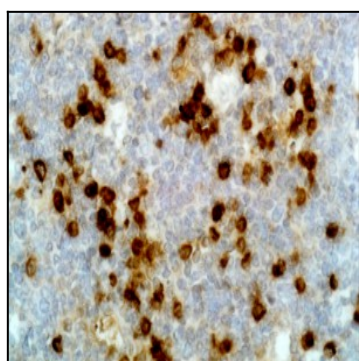


Figure 1: Immunohistochemistry of Human Tonsil using Anti- Lambda Light Chain antibody Clone: RM127.

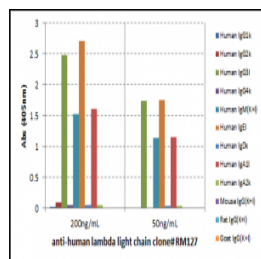


Figure 2: ELISA of human immunoglobulins shows Clone: RM127 reacts to the Lambda light chain of human immuno-globulins. No cross reactivity with the Kappa light chain, mouse IgG, rat IgG, or goat IgG. The plate was coated with 50 ng/well of different immunoglobulins. 200 ng/mL or 50 ng/mL of Clone: RM127 was used as the primary antibody. An alkaline phosphatase conjugated anti-rabbit IgG as the secondary antibody.

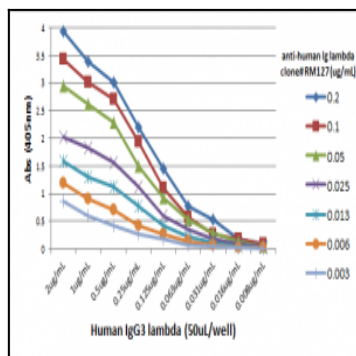


Figure 3: A titration ELISA using Clone: RM127. The plate was coated with different amounts of human IgG3 Lambda . A serial dilution of Clone: RM127 was used as the primary antibody. An alkaline phosphatase conjugated anti-rabbit IgG as the secondary antibody.