

10-9521: Recombinant Rabbit Monoclonal Antibody to Human IgM (Clone: RM121)(Discontinued)

Clonality :	Monoclonal
Clone Name :	RM121
Application :	ICC,IHC,FACS,ELISA
Reactivity :	Human
Gene :	IGHM
Gene ID :	3507
Uniprot ID :	P01871
Format :	Purified
Alternative Name :	IGHM
Isotype :	Rabbit IgG
Immunogen Information :	Human IgM

Product Info

Amount :	100 µg
Purification :	Protein A affinity purified from an animal origin-free culture supernatant
Content :	1 mg/ml in 50% Glycerol/PBS with 1% BSA and 0.09% sodium azide
Storage condition :	Store at -20°C. Avoid repeated freeze and thaw cycles.

Application Note

Clone RM121 reacts to the heavy chain of human IgM. No cross reactivity with human IgG, IgA, IgD, or IgE. ELISA: 50ng/well \times 200ng/well (for Capture); 0.05 μ g/ml \times 0.2 μ g/ml (for Detection); Immunocytochemistry (ICC): 0.5 μ g/ml-2 μ g/ml; Immunohistochemistry (IHC): 0.5 μ g/ml-2 μ g/ml.

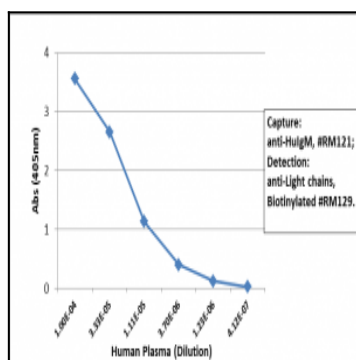


Figure 1: Sandwich ELISA using Clone: RM121 as the capture antibody (100ng/well), and Biotinylated anti-human light chains (Kappa+ Lambda) antibody Clone: RM129 as the detection antibody, followed by an alkaline phosphatase conjugated streptavidin.

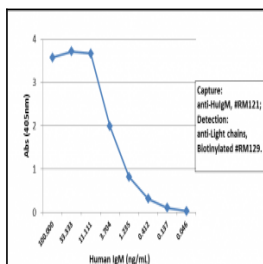


Figure 2: Sandwich ELISA using Clone: RM121 as the capture antibody (100 ng/well), and Biotinylated anti-human light chains (Kappa+ Lambda) antibody Clone: RM129 as the detection antibody, followed by an alkaline phosphatase conjugated streptavidin.

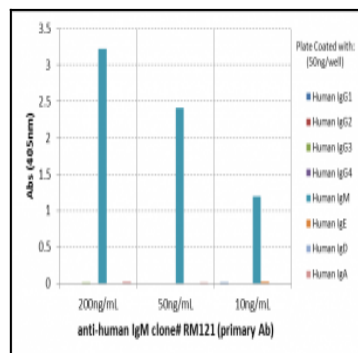


Figure 3: ELISA of human immunoglobulins shows Clone: RM121 reacts only to human IgM. No cross reactivity with Human IgG, IgE, IgD, or IgA. The plate was coated with 50 ng/well of different immunoglobulins. 200 ng/mL, 50 ng/mL of Clone: RM121 was used as the primary antibody. An alkaline phosphatase conjugated anti-rabbit IgG as the secondary antibody.

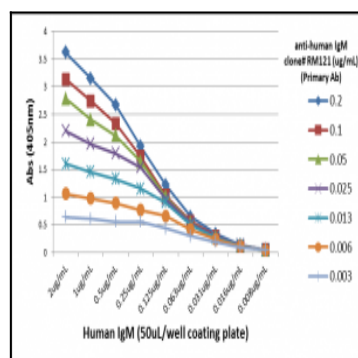


Figure 4: A titer ELISA using Clone: RM121. The plate was coated with different amounts of human IgM. A serial dilution of Clone: RM121 was used as the primary antibody. An alkaline phosphatase conjugated anti-rabbit IgG as the secondary antibody.