

## 10-9524-B: Biotinylated Recombinant Rabbit Monoclonal Antibody to Human IgA2 (Clone: RM125)(Discontinued)

Clonality :	Monoclonal
Clone Name :	RM125
Application :	ICC,IHC,FACS,ELISA
Reactivity :	Human
Conjugate :	Biotin
Gene :	IGHA2
Gene ID :	3494
Uniprot ID :	P01877
Format :	Purified
Alternative Name :	IGHA2
Isotype :	Rabbit IgG
Immunogen Information :	IgA2

### Product Info

Amount :	50 µg
Purification :	Protein A affinity purified from an animal origin-free culture supernatant
Content :	1 mg/ml in 50% Glycerol/PBS with 1% BSA and 0.09% sodium azide
Storage condition :	Store at -20°C. Avoid repeated freeze and thaw cycles.

### Application Note

Clone RM125 reacts to human IgA2. No cross reactivity with human IgA1, IgG, IgM, IgD, or IgE. ELISA: 50ng/well – 200ng/well (for Capture); 0.05 µg/ml – 0.2 µg/ml (for Detection); Immunocytochemistry (ICC): 0.5 µg/ml-2 µg/ml; Immunohistochemistry (IHC): 0.1 µg/ml-1 µg/ml.

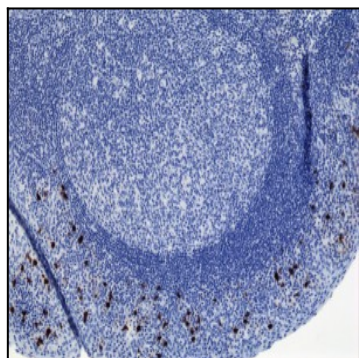


Figure 1: Immunohistochemistry of Human Tonsil Tissue using Anti-Human IgA2 antibody Clone: RM125.

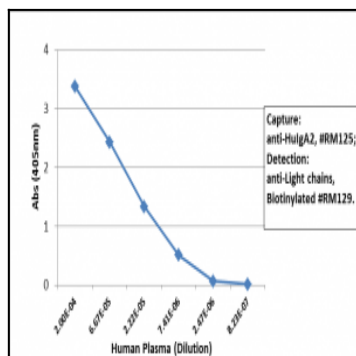


Figure 2: Sandwich ELISA using Clone: RM125 as the capture antibody (100 ng/well), and Biotinylated anti-human light chains (Kappa+ Lambda) antibody Clone: RM129 as the detection antibody, followed by an alkaline phosphatase conjugated streptavidin.

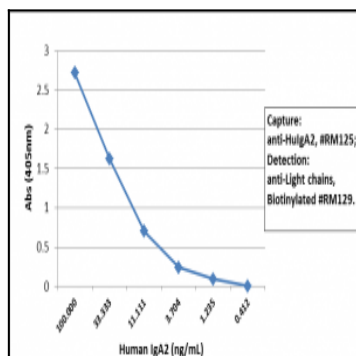


Figure 3: Sandwich ELISA using Clone: RM125 as the capture antibody (100 ng/well), and Biotinylated anti-human light chains (Kappa+ Lambda) antibody Clone: RM129 as the detection antibody, followed by an alkaline phosphatase conjugated streptavidin.

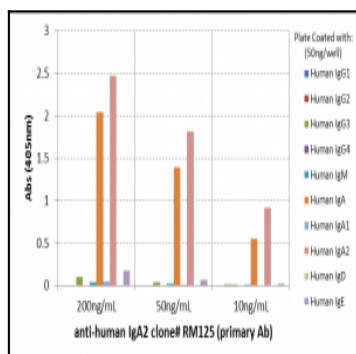


Figure 4: ELISA of human immunoglobulins shows Clone: RM125 reacts only to Human IgA2. No cross reactivity with Human IgA1, IgG, IgM, IgD, or IgE. The plate was coated with 50 ng/well of different immunoglobulins. 200 ng/mL, 50 ng/mL, or 10 ng/mL of Clone: RM125 was used as the primary antibody. An alkaline phosphatase conjugated anti-rabbit IgG as the secondary antibody.

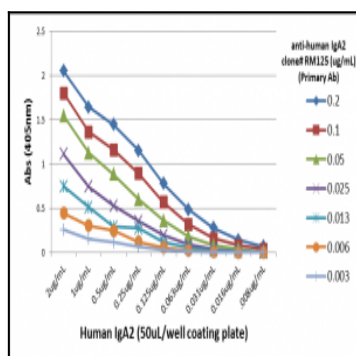


Figure 5: A titer ELISA using Clone: RM125. The plate was coated with different amounts of human IgA2. A serial dilution of Clone: RM125 was used as the primary antibody. An alkaline phosphatase conjugated anti-rabbit IgG as the secondary antibody.