

10-9532: Recombinant Rabbit Monoclonal Antibody to Acetylated -Lysine (Clone: RM101)(Discontinued)

Clonality :	Monoclonal
Clone Name :	RM101
Application :	WB,IP,ICC,IHC,FACS,ELISA
Reactivity :	All Species
Format :	Purified
Isotype :	Rabbit IgG
Immunogen Information :	Acetyllysine -BSA

Product Info

Amount :	100 µg
Purification :	Protein A affinity purified from an animal origin-free culture supernatant
Content :	1 mg/ml in 50% Glycerol/PBS with 1% BSA and 0.09% sodium azide
Storage condition :	Store at -20°C. Avoid repeated freeze and thaw cycles.

Application Note

Clone RM101 reacts to lysine-acetylated proteins. No cross reactivity with nonacetylated lysine, and lysines with other modifications. Western Blot (WB): 1:500 -1:2000 dilution; Immunoprecipitation (IP): 1:100-1:500 dilution; Chromatin IP (ChIP): 1:100-1:500 dilution; Immunocytochemistry (ICC): 1:100-1:500 dilution; Immunohistochemistry (IHC): 1:100-1:500 dilution.

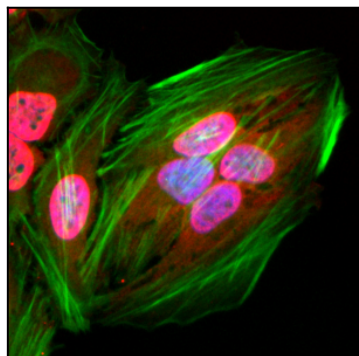


Figure 1: Immunocytochemical staining of HeLa cells using Anti-Acetylated Lysine antibody Clone: RM101 (red). Actin filaments was labeled with fluorescein phalloidin (green), and nucleus stained with DAPI (blue).

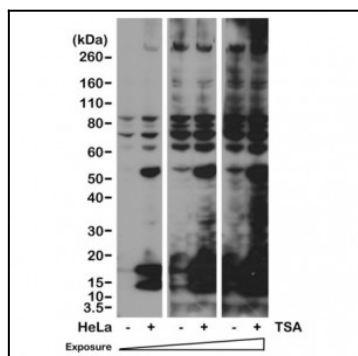


Figure 2: Western blot of HeLa cells nontreated or treated with Trichostatin A (TSA), using Clone: RM101 at 1/2000 dilution.

