

## 10-9534-B: Biotinylated Recombinant Rabbit Monoclonal Antibody to Polyethylene Glycol (Clone: RM105)(Discontinued)

|                                |                                     |
|--------------------------------|-------------------------------------|
| <b>Clonality :</b>             | Monoclonal                          |
| <b>Clone Name :</b>            | RM105                               |
| <b>Application :</b>           | WB,IP,ICC,IHC,FACS,ELISA            |
| <b>Reactivity :</b>            | All Species                         |
| <b>Conjugate :</b>             | Biotin                              |
| <b>Format :</b>                | Purified                            |
| <b>Isotype :</b>               | Rabbit IgG                          |
| <b>Immunogen Information :</b> | KLH-PEG with terminal methoxy group |

### Product Info

|                            |  |
|----------------------------|--|
| <b>Amount :</b>            | 50 µg  |
| <b>Purification :</b>      | Protein A affinity purified from an animal origin-free culture supernatant |
| <b>Content :</b>           | 1 mg/ml in 50% Glycerol/PBS with 1% BSA and 0.09% sodium azide             |
| <b>Storage condition :</b> | Store at -20°C. Avoid repeated freeze and thaw cycles.                     |

### Application Note

Clone RM105 reacts to the methoxy group of Polyethylene glycol (PEG). It is specific for methoxypolyethylene glycol. ELISA: 0.02 Åµg/ml-0.5 Åµg/ml; Immunohistochemistry (IHC): 0.5 Åµg/ml-2 Åµg/ml; Western Blot (WB) : 0.1 Åµg/ml-1 Åµg/ml.

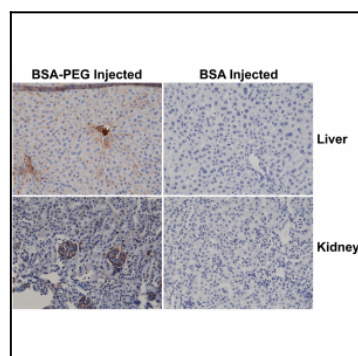


Figure 1: Immunohistochemistry of mouse liver and kidney using 0.5 µg/ml of anti-PEG Clone: RM105 biotin conjugate, followed by an HRP conjugated streptavidin. The mouse was injected with PEG-BSA or BSA 3 hours before sampling.

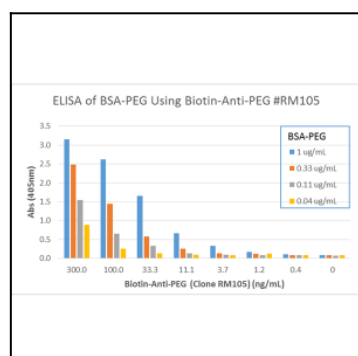


Figure 2: ELISA of PEGylated BSA using Biotinylated anti-PEG rabbit monoclonal antibody Clone: RM105. The ELISA plate was coated with 50 µL/well of BSA-PEG at 1 µg/ml, 0.33 µg/ml, 0.11 µg/ml, and 0.04 µg/ml. Different concentrations of Biotinylated anti-PEG mAb Clone: RM105 was used as the primary antibody, followed by an AP conjugated Streptavidin.

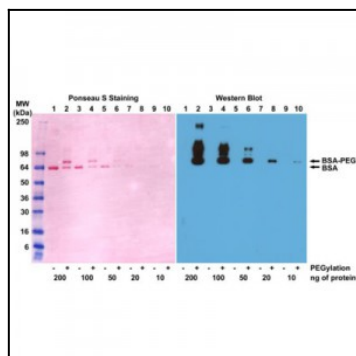


Figure 3: Western blot of BSA and PEGylated BSA (mPEG 5 kDa) using 0.1  $\mu\text{g/ml}$  of anti-PEG Clone: RM105.