

10-9535: Recombinant Rabbit Monoclonal Antibody to Phosphotyrosine (Clone: RM111)(Discontinued)

Clonality :	Monoclonal
Clone Name :	RM111
Application :	WB,IP,ICC,IHC,FACS,ELISA
Reactivity :	All Species
Format :	Purified
Isotype :	Rabbit IgG
Immunogen Information :	Phosphotyrosine-BSA conjugate

Product Info

Amount :	100 µg
Purification :	Protein A affinity purified from an animal origin-free culture supernatant
Content :	1 mg/ml in 50% Glycerol/PBS with 1% BSA and 0.09% sodium azide
Storage condition :	Store at -20°C. Avoid repeated freeze and thaw cycles.

Application Note

Clone RM111 reacts to tyrosine-phosphorylated proteins. No cross reactivity with nonphosphorylated tyrosine, phosphoserine, and phosphothreonine Western Blot (WB): 1:1000 -1:5000 dilution; Immunoprecipitation (IP): 1:200-1:1000 dilution; Chromatin IP (ChIP): 1:200-1:1000 dilution; Immunocytochemistry (ICC): 1:200-1:500 dilution; Immunohistochemistry (IHC): 1:200-1:500 dilution.

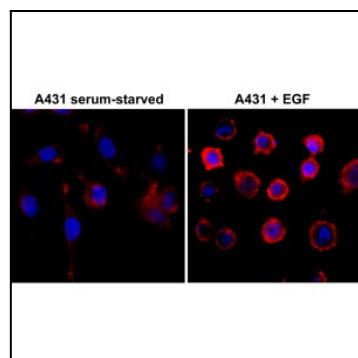


Figure 1: Immunocytochemistry of serum-starved A431 cells nontreated or treated with EGF, using Clone: RM111 at 1/500 dilution (followed by a PE conjugated secondary antibody, red) and DAPI (blue).

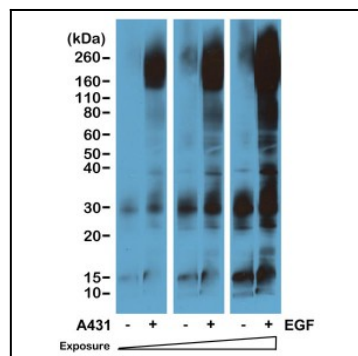


Figure 2: Western blot of serum-starved A431 cells non-treated or treated with EGF, using Clone: RM111 at 1/5000 dilution. The blot was exposed to the film at different time points.

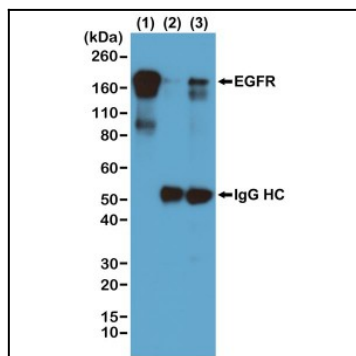


Figure 3: Immunoprecipitation of EGF-treated A431 cells by Cone Clone: RM111 at 1/1000 dilution, was blotted with an anti-EGFR rabbit monoclonal antibody. (1) Whole lysate control; (2) IP by rabbit IgG control; (3) IP by Clone: RM111.

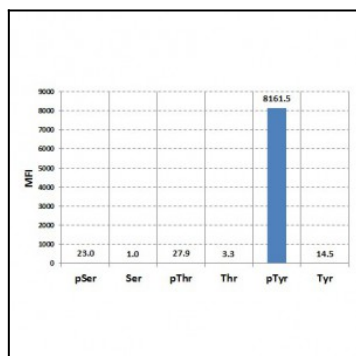


Figure 4: Luminex analysis of Clone: RM111's reaction against phosphorylated or non phosphorylated Serine, Threonine, and Tyrosine. Clone: RM111 reacts only to phosphorylated Tyrosine.