

10-9537: Recombinant Rabbit Monoclonal Antibody to Beta -actin (Clone: RM112)(Discontinued)

Clonality :	Monoclonal
Clone Name :	RM112
Application :	IP,ELISA,IHC,FACS,WB
Gene :	ACTB
Gene ID :	60
Uniprot ID :	P60709
Format :	Purified
Alternative Name :	ACTB
Isotype :	Rabbit IgG
Immunogen Information :	A peptide corresponding to the N-terminus of Beta -actin

Product Info

Amount :	100 µl
Purification :	Protein A affinity purified from an animal origin-free culture supernatant
Content :	1 mg/ml in 50% Glycerol/PBS with 1% BSA and 0.09% sodium azide
Storage condition :	Store at -20°C. Avoid repeated freeze and thaw cycles.

Application Note

Clone RM112 reacts to Alpha-Actin (Actin, cytoplasmic 1). No cross reactivity with other isoform RMs of Actin. Western Blot (WB): 1:1000 dilution; Immunoprecipitation (IP): 1:200 dilution; Chromatin IP (ChIP): 1:200 dilution; Immunocytochemistry (ICC): 1:200 dilution; Immunohistochemistry (IHC): 1:200 dilution.

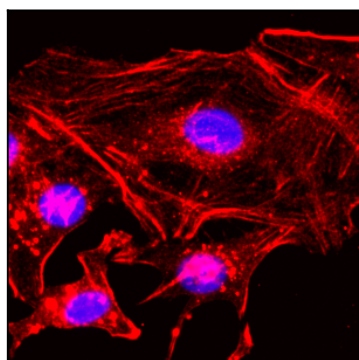


Figure 1: Immunocytochemical staining of HeLa cells, using anti- Beta -Actin Clone: RM112 at 1/200 dilution (red). Nuclei have been labeled with DAPI (blue).

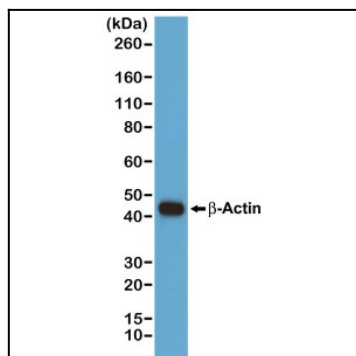


Figure 2: Western blot of A431 cells, using anti- Beta -Actin Clone: RM112 at a 1/1000 dilution, showed a band of Beta -Actin at the predicted MW (42 kDa).