

10-9540: Recombinant Rabbit Monoclonal Antibody to Monomethylated Histone H3 Lysine 4, H3K4me1 (Clone: RM140)(Discontinued)

Clonality :	Monoclonal
Clone Name :	RM140
Application :	WB,ELISA,Multiplex,ChIP,ICC
Reactivity :	All Species
Gene :	H3F3A
Gene ID :	3020
Uniprot ID :	P84243
Format :	Purified
Alternative Name :	Histone H3.3
Isotype :	Rabbit IgG
Immunogen Information :	A monomethyl-peptide corresponding to Monomethyl-Histone H3 (Lys4)

Product Info

Amount :	100 µg
Purification :	Protein A affinity purified from an animal origin-free culture supernatant
Content :	1 mg/ml in 50% Glycerol/PBS with 1% BSA and 0.09% sodium azide
Storage condition :	Store at -20°C. Avoid repeated freeze and thaw cycles.

Application Note

Clone RM140 reacts to Histone H3 monomethylated at Lysine 4 (K4me1). No cross reactivity with dimethylated Lysine 4 (K4me2), trimethylated Lysine 4 (K4me3), or other methylations in histone H3 Western Blot: 0.2 Åµg/ml ÅµÅµ 1 Åµg/ml; ChIP: 2 Åµg/ml- 10 Åµg/ml; ICC: 1 Åµg/ml - 2 Åµg/ml; ELISA: 0.2 Åµg/ml - 1 Åµg/ml; Multiplex: 0.1 Åµg/ml ÅµÅµ 0.5 Åµg/ml.

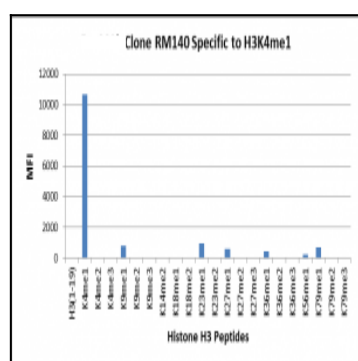


Figure 1: Clone: RM140 specifically reacts to Histone H3 monomethylated at Lysine 4 (K4me1). No cross reactivity with dimethylated Lysine 4 (K4me2), trimethylated Lysine 4 (K4me3), or other methylations in histone H3.

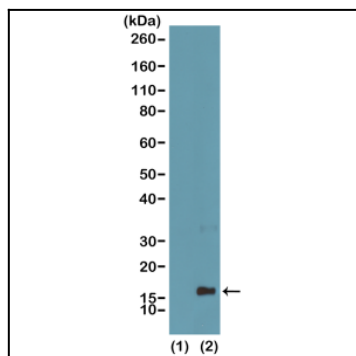


Figure 2: Western Blot of recombinant histone H3.3 (1) and acid extracts of HeLa cells (2), using Clone: RM140 at 0.5 μ g/ml, showed a band of histone H3 monomethylated at Lysine4 (K4me1) in HeLa cells.

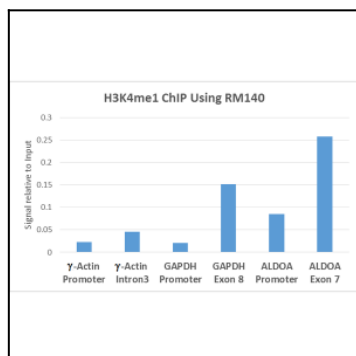


Figure 3: ChIP performed on HeLa cells using H3K4me1 antibody (Clone: RM140, 5 μ g). Real-time PCR was performed using primers specific to the gene indicated.

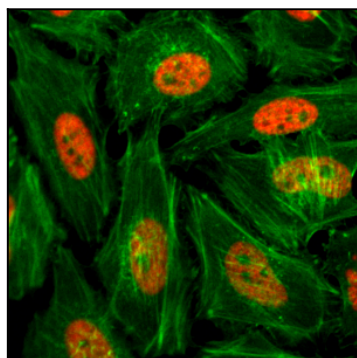


Figure 4: Immunocytochemistry of HeLa cells treated with sodium butyrate, using Monomethyl-Histone H3(Lys4) Rabbit mAb Clone: RM140 (red). Actin filaments have been labeled with fluorescein phalloidin (green).