

## 10-9541: Recombinant Rabbit Monoclonal Antibody to Dimethylated Histone H3 Lysine 4, H3K4me2 (Clone: RM135)(Discontinued)

<b>Clonality :</b>	Monoclonal
<b>Clone Name :</b>	RM135
<b>Application :</b>	WB,ELISA,Multiplex,ICC
<b>Reactivity :</b>	All Species
<b>Gene :</b>	H3F3A
<b>Gene ID :</b>	3020
<b>Uniprot ID :</b>	P84243
<b>Format :</b>	Purified
<b>Alternative Name :</b>	Histone H3.3
<b>Isotype :</b>	Rabbit IgG
<b>Immunogen Information :</b>	A dimethyl-peptide corresponding to Dimethyl-Histone H3 (Lys4)

### Product Info

<b>Amount :</b>	100 µg
<b>Purification :</b>	Protein A affinity purified from an animal origin-free culture supernatant
<b>Content :</b>	1 mg/ml in 50% Glycerol/PBS with 1% BSA and 0.09% sodium azide
<b>Storage condition :</b>	Store at -20°C. Avoid repeated freeze and thaw cycles.

### Application Note

Clone RM135 reacts to Histone H3 dimethylated at Lysine 4 (K4me2). No cross reactivity with monomethylated Lysine 4 (K4me1), trimethylated Lysine 4 (K4me3), or other methylations in histone H3. Western Blot: 0.02 Åµg/ml Åµg/ml 0.2 Åµg/ml; ICC: 1 Åµg/ml - 2 Åµg/ml; ELISA: 0.2 Åµg/ml - 1 Åµg/ml; Multiplex: 0.1 Åµg/ml Åµg/ml 0.5 Åµg/ml.

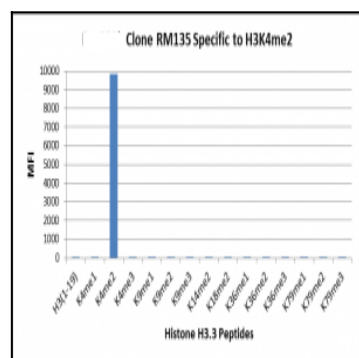


Figure 1: Clone: RM135 specifically reacts to Histone H3 dimethylated at Lysine 4 (K4me2). No cross reactivity with mono- methylated Lysine 4 (K4me1), trimethylated Lysine 4(K4me3), or other methylations in histone H3.

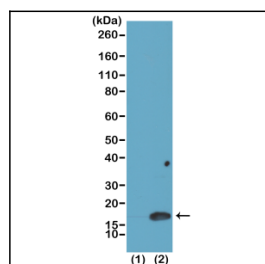


Figure 2: Western Blot of recombinant histone H3.3 (1) and acid extracts of HeLa cells (2), using Clone: RM135 at 0.025 µg/ml, showed a band of histone H3 dimethylated at Lysine 4 (K4me2) in HeLa cells.

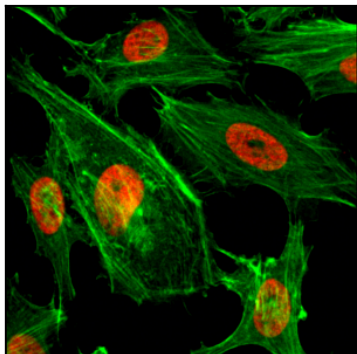


Figure 3: Immunocytochemistry of HeLa cells treated with sodium butyrate, using Dimethyl-Histone H3 (Lys4) Rabbit mAb Clone: RM135 (red). Actin filaments have been labeled with fluorescein phalloidin (green).