

## 10-9557: Recombinant Rabbit Monoclonal Antibody to Dimethylated Histone H3 Lysine 18, H3K18me2 (Clone: RM168)(Discontinued)

<b>Clonality :</b>	Monoclonal
<b>Clone Name :</b>	RM168
<b>Application :</b>	WB,ELISA,Multiplex
<b>Reactivity :</b>	All Species
<b>Gene :</b>	H3F3A
<b>Gene ID :</b>	3020
<b>Uniprot ID :</b>	P84243
<b>Format :</b>	Purified
<b>Alternative Name :</b>	Histone H3.3
<b>Isotype :</b>	Rabbit IgG
<b>Immunogen Information :</b>	A dimethyl-peptide corresponding to Dimethyl-Histone H3 (Lys18).

### Product Info

<b>Amount :</b>	100 µg
<b>Purification :</b>	Protein A affinity purified from an animal origin-free culture supernatant
<b>Content :</b>	1 mg/ml in 50% Glycerol/PBS with 1% BSA and 0.09% sodium azide
<b>Storage condition :</b>	Store at -20°C. Avoid repeated freeze and thaw cycles.

### Application Note

Clone RM168 reacts to Histone H3 dimethylated at Lysine 18 (K18me2). No cross reactivity with nonmodified Lysine 18, monomethylated Lysine 18 (K18me1), or other methylations in histone H3. Western Blot: 0.2 Åµg/ml Åµ 1 Åµg/ml; ELISA: 0.1 Åµg/ml - 0.5 Åµg/ml; Multiplex: 0.1 Åµg/ml Åµ 0.5 Åµg/ml.

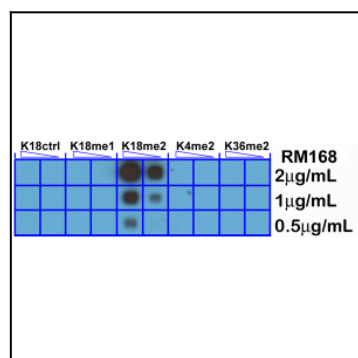


Figure 1: A Peptide dotblot shows Clone: RM168 only reacts to Histone. H3 dimethyl-Lysine 18 (K18me2). No cross reactivity. with nonmodified Lysine 18 (K18Ctrl), monomethylated. Lysine 18 (K18me1), dimethylated Lysine 4 (K4me2), or dimethylated Lysine 36 (K36me2).

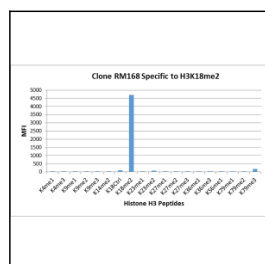


Figure 2: Clone: RM168 specifically reacts to Histone H3 dimethylated at Lysine 18 (K18me2). No cross reactivity with other methylated lysines in Histone H3.

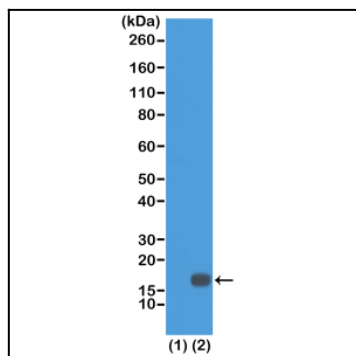


Figure 3: Western Blot of recombinant histone H3.3 (1) and acid extracts of HeLa cells (2), using Clone: RM168 at 0.5  $\mu$ g/ml, showed a band of histone H3 dimethylated at Lysine 18 (K18me2) in HeLa cells.