

10-9558: Recombinant Rabbit Monoclonal Antibody to Monomethylated Histone H3 Lysine 18, H3K18me1 (Clone: RM167)(Discontinued)

Clonality :	Monoclonal
Clone Name :	RM167
Application :	WB,ELISA,Multiplex
Reactivity :	All Species
Gene :	H3F3A
Gene ID :	3020
Uniprot ID :	P84243
Format :	Purified
Alternative Name :	Histone H3.3
Isotype :	Rabbit IgG
Immunogen Information :	A monomethyl-peptide corresponding to Monomethyl-Histone H3 (Lys18)

Product Info

Amount :	100 µg
Purification :	Protein A affinity purified from an animal origin-free culture supernatant
Content :	1 mg/ml in 50% Glycerol/PBS with 1% BSA and 0.09% sodium azide
Storage condition :	Store at -20°C. Avoid repeated freeze and thaw cycles.

Application Note

Clone RM167 reacts to Histone H3 monomethylated at Lysine 18 (K18me1). No cross reactivity with nonmodified Lysine 18 or dimethylated Lysine 18 (K18me2), or other methylations in histone H3. Western Blot: 1 Åµg/ml Å²Å² 2 Å²Å²µg/ml; ELISA: 0.2 Å²Å²µg/ml - 1 Å²Å²µg/ml; Multiplex: 0.1 Å²Å²µg/ml Å²Å² 0.5 Å²Å²µg/ml.

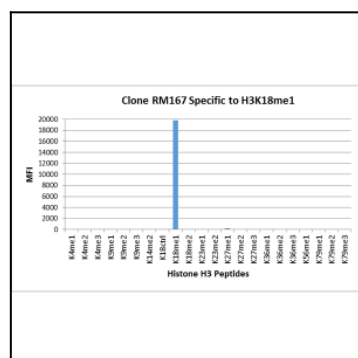


Figure 1: Clone: RM167 specifically reacts to Histone H3 monomethylated at Lysine 18 (K18me1). No cross reactivity with nonmodified Lysine 18 (K18Ctrl) or dimethylated Lysine 18 (K18me2), or other methylations in histone H3.

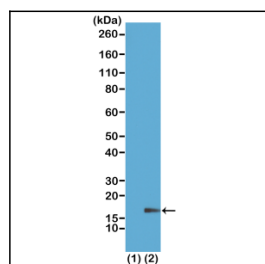


Figure 2: Western Blot of recombinant histone H3.3 (1) and acid extracts of HeLa cells (2), using Clone: RM167 at 1 µg/ml, showed a band of histone H3 monomethylated at Lysine 18 (K18me1) in HeLa cells.